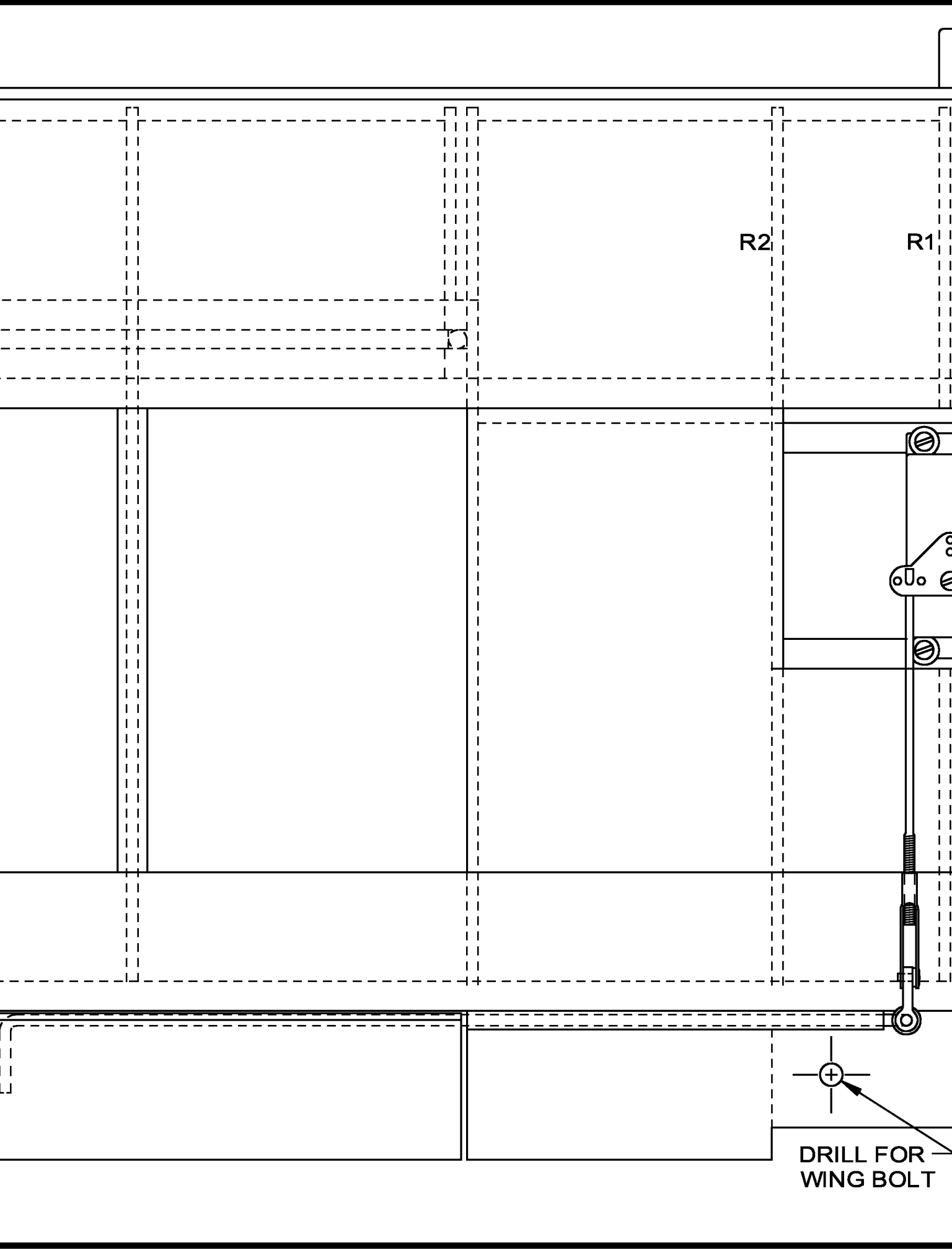


1/8" POPLAR
(1" UNDER E

6"

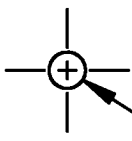


PLY DIHEDERAL BRACE
(EACH TIP RIB)



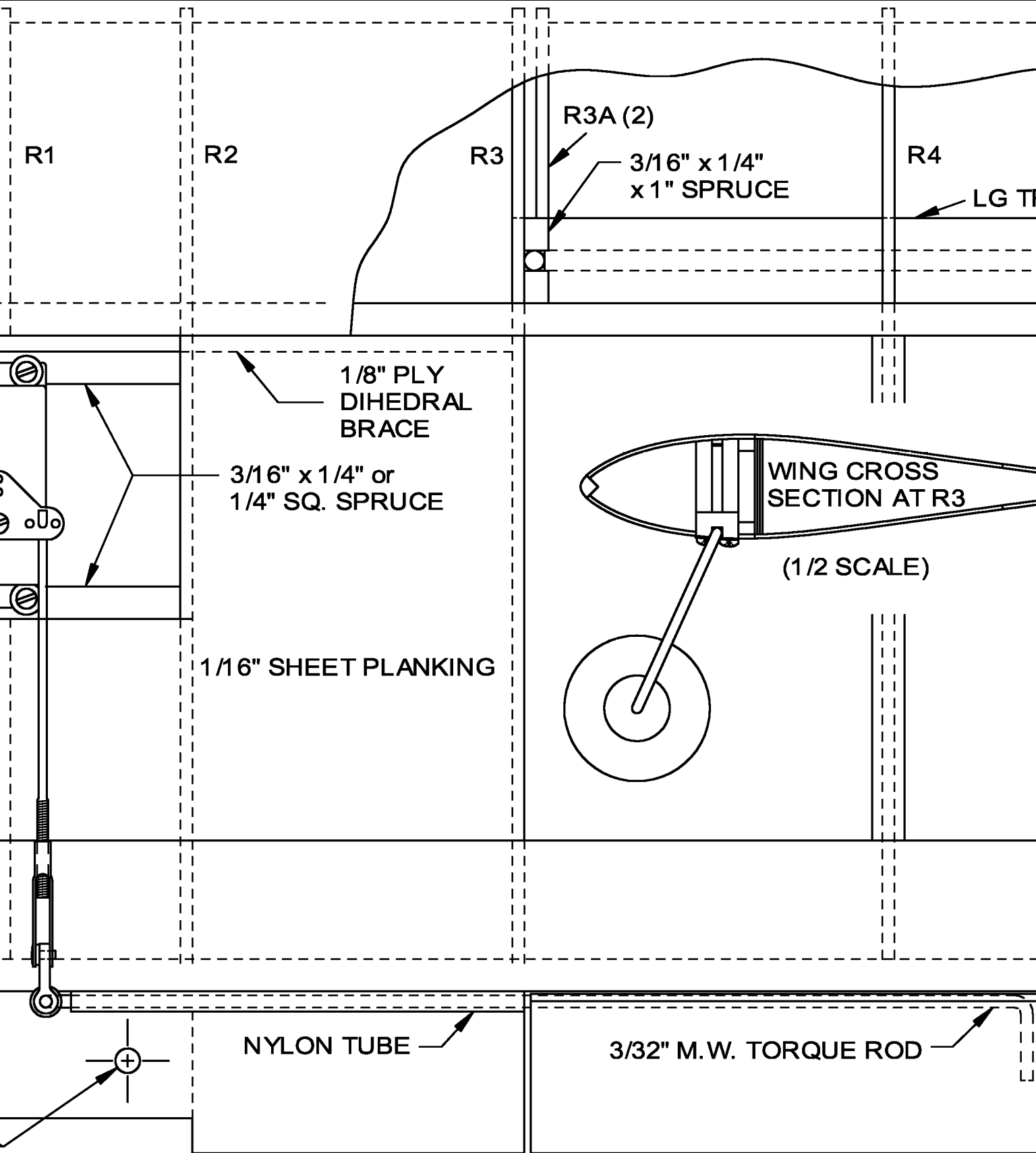
R2

R1

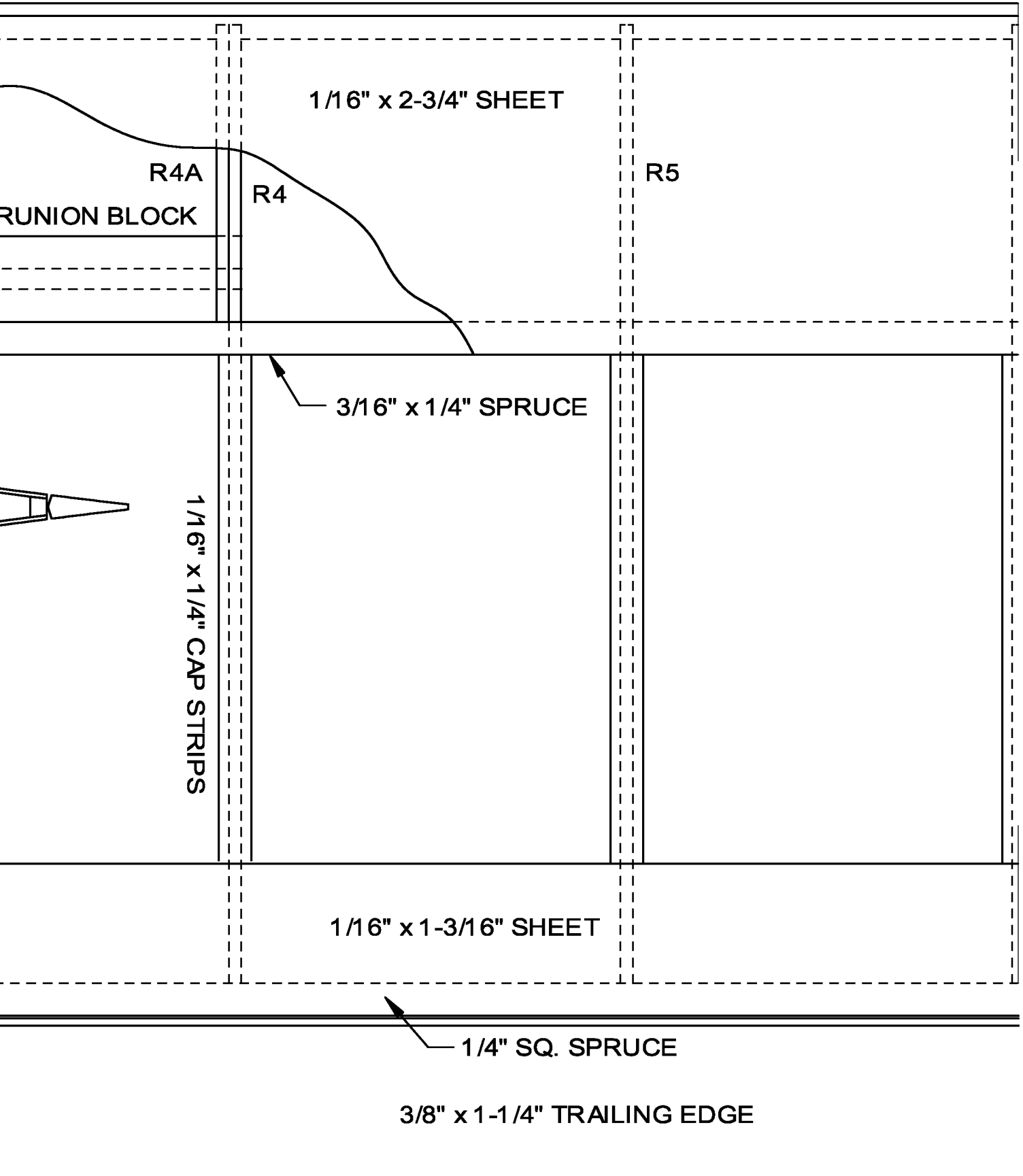


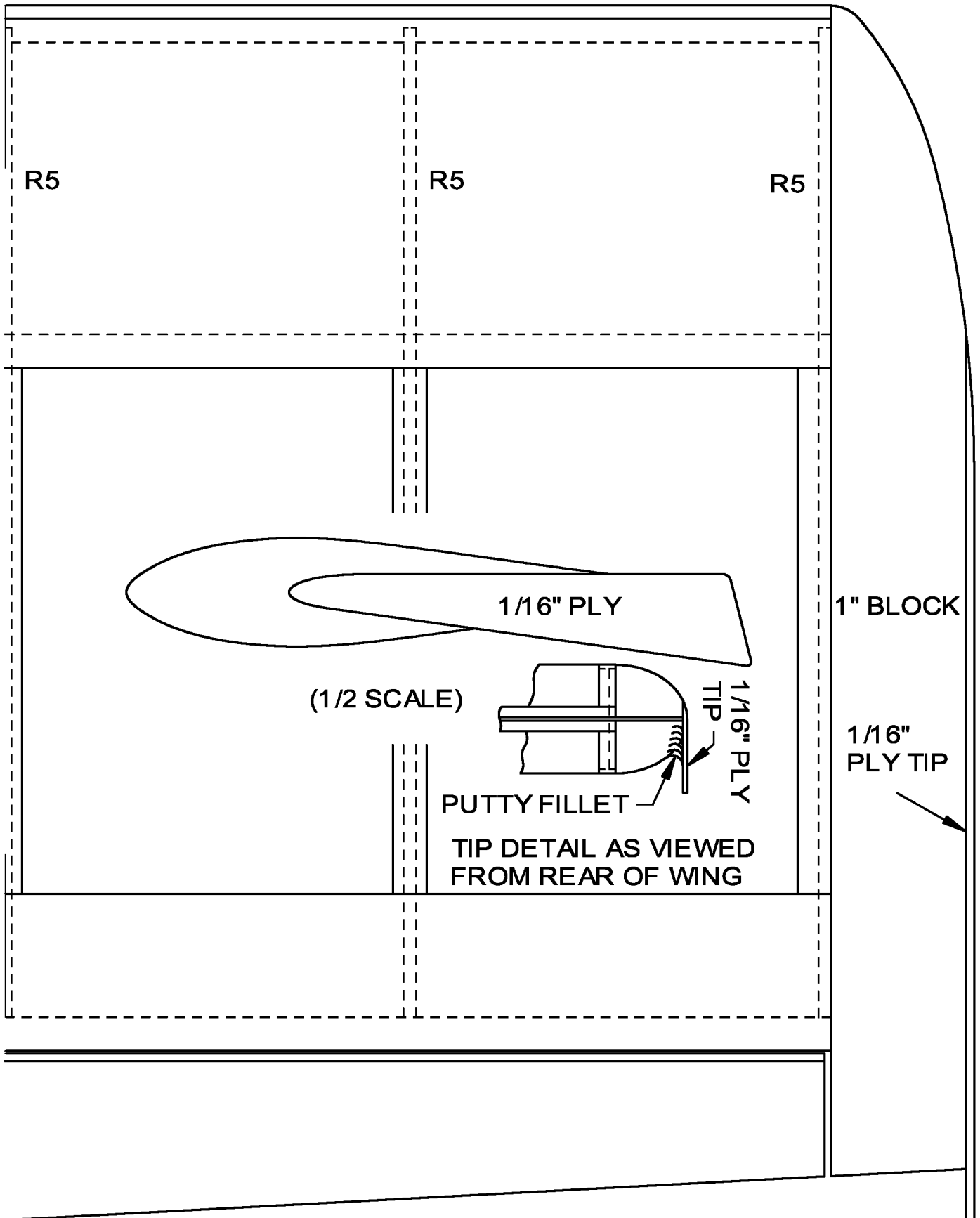
DRILL FOR
WING BOLT

3/16" DOWEL



1/4" SQ. L.E.





ALL RIBS 3/32" Balsa

R1 (2)

R2 (2)

R3 (2)

R4 (4)

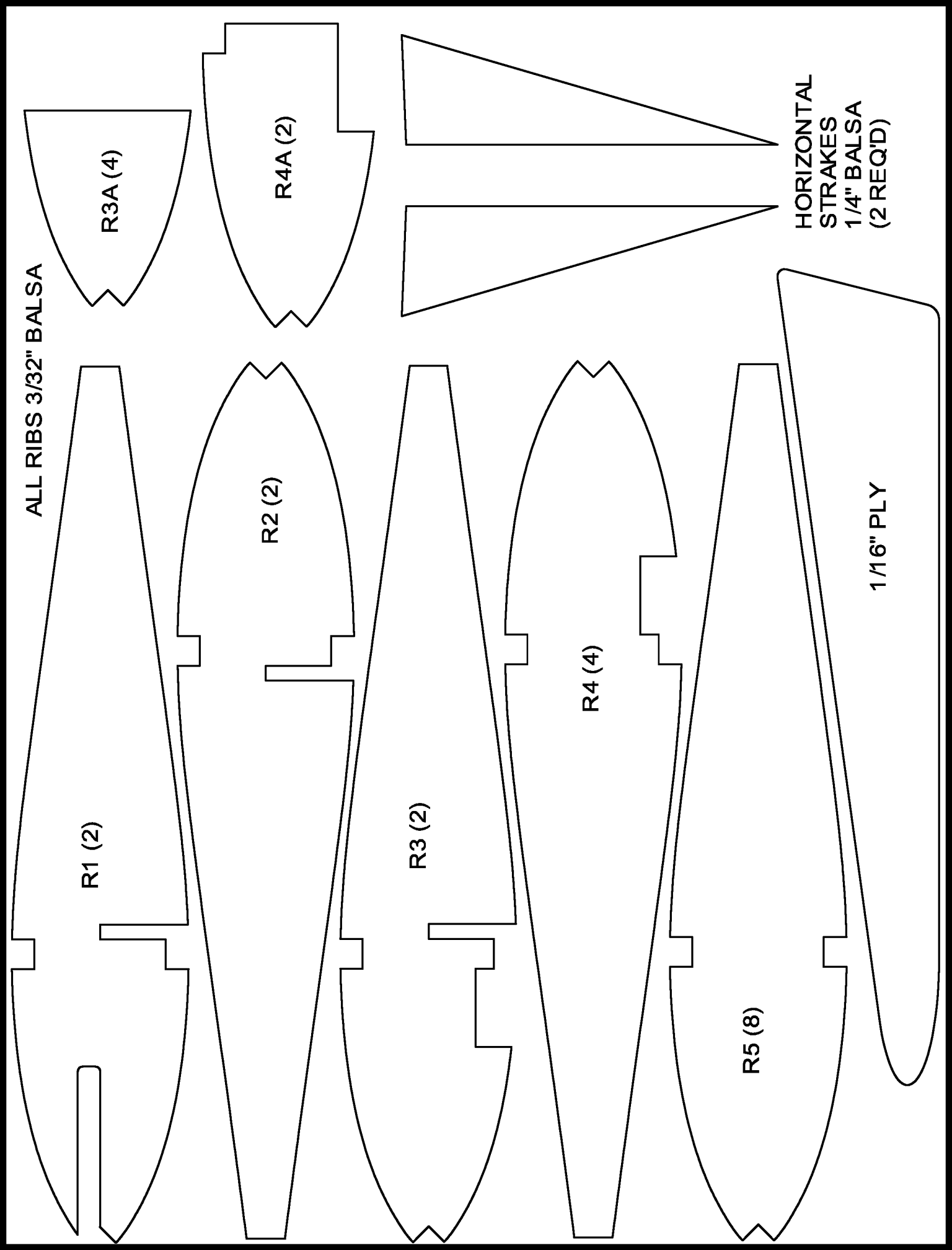
R5 (8)

R3A (4)

R4A (2)

HORIZONTAL STRAKES
1/4" Balsa
(2 REQ'D)

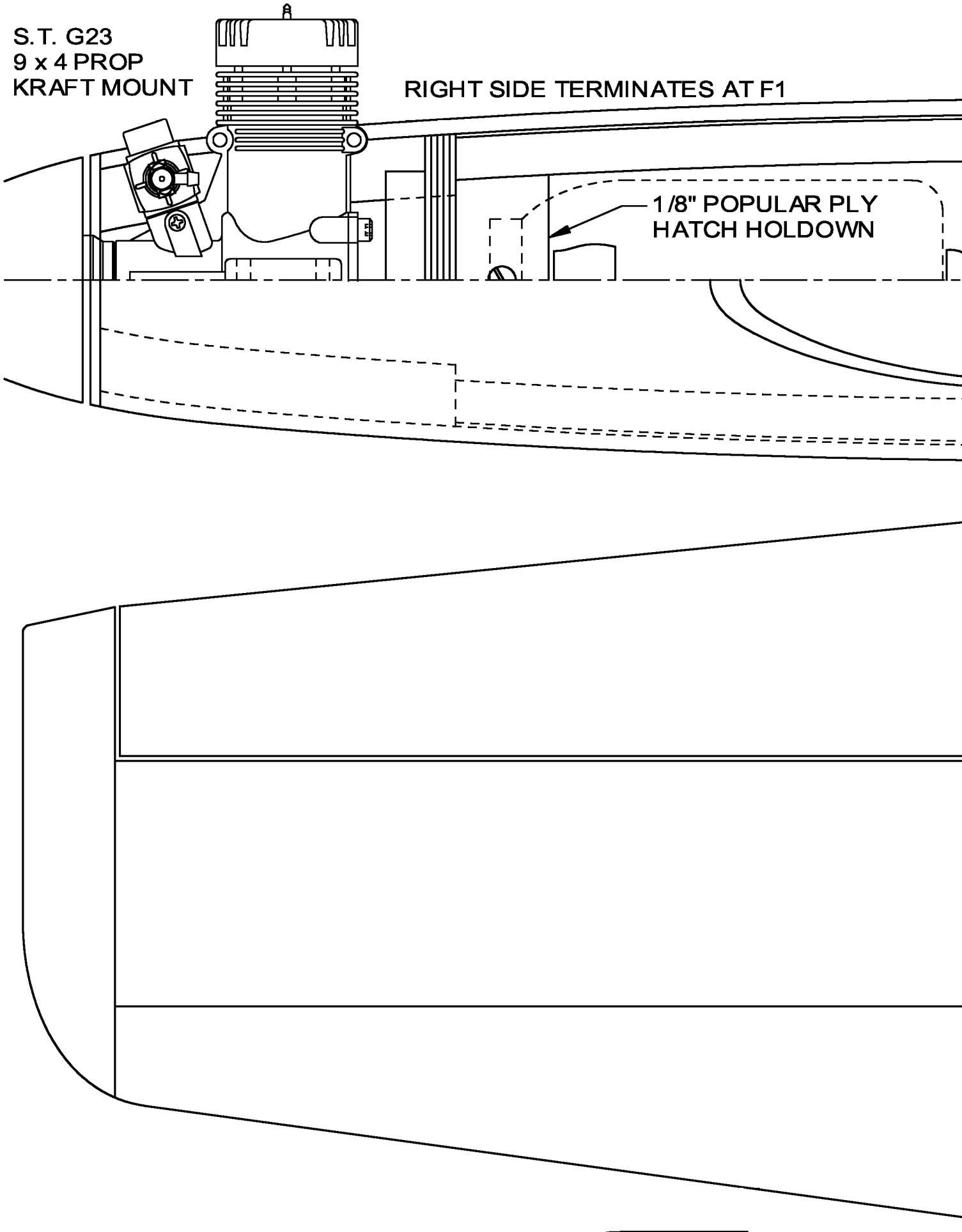
1/16" PLY

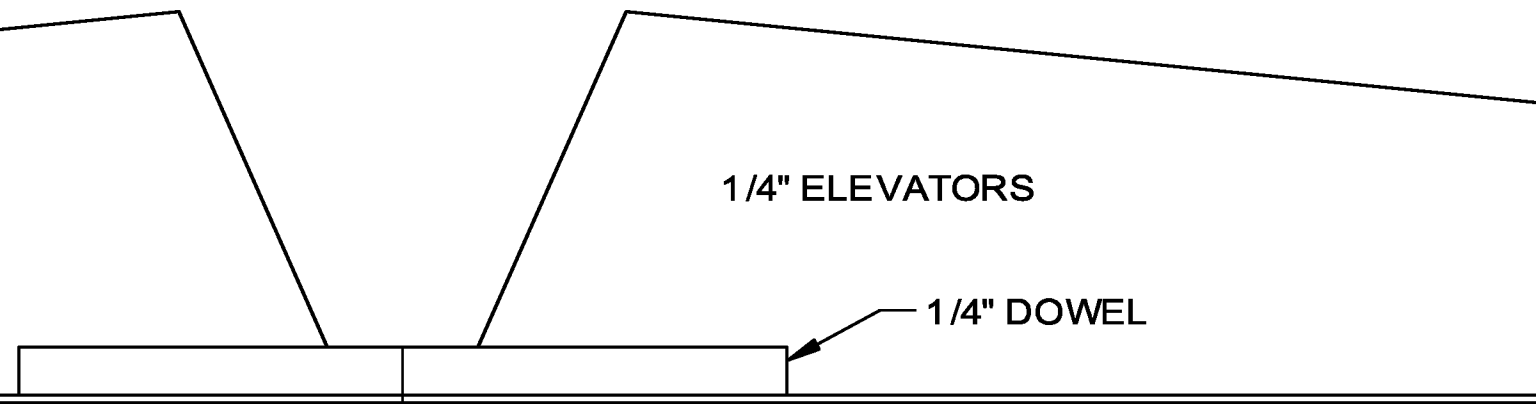
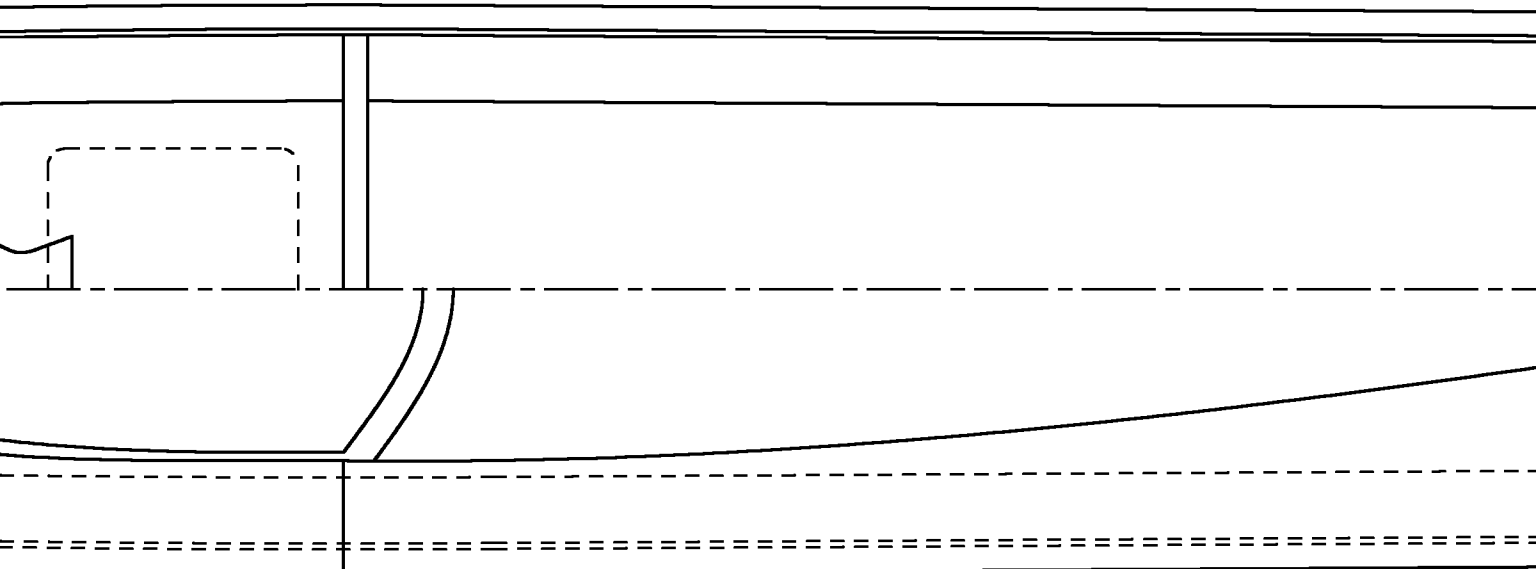


S.T. G23
9 x 4 PROP
KRAFT MOUNT

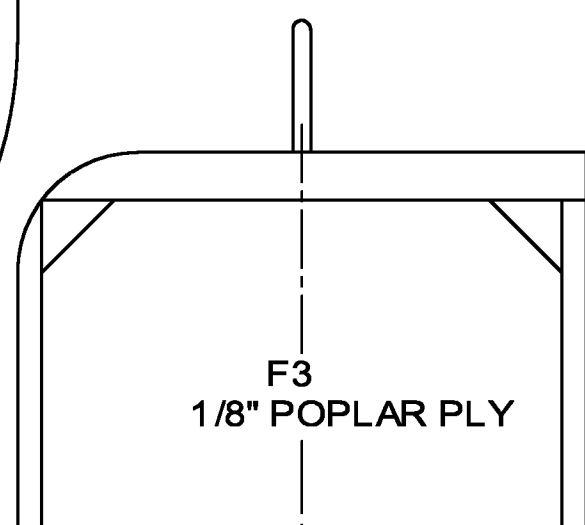
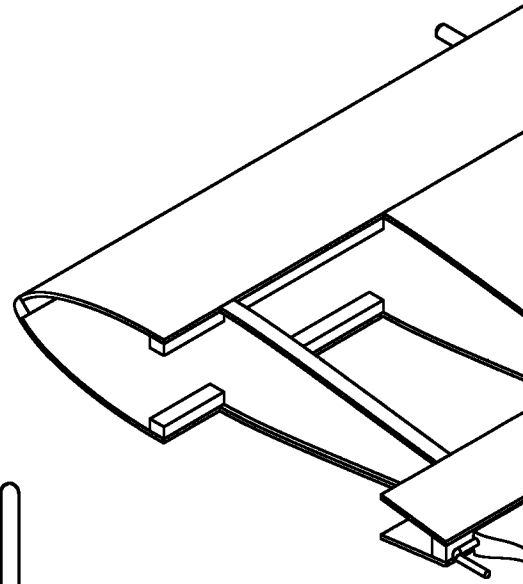
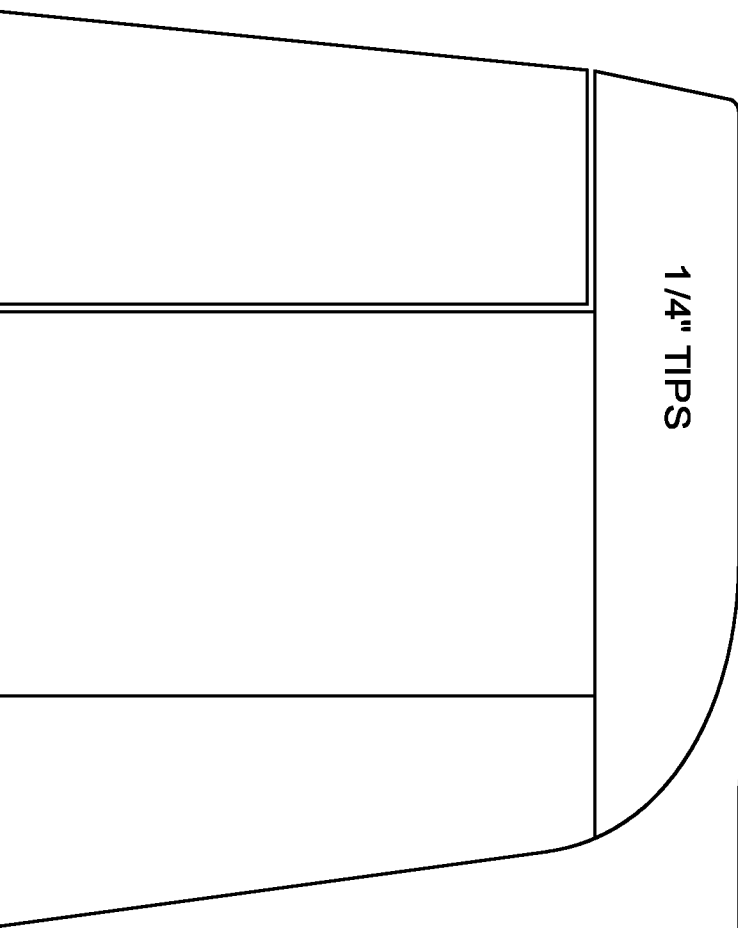
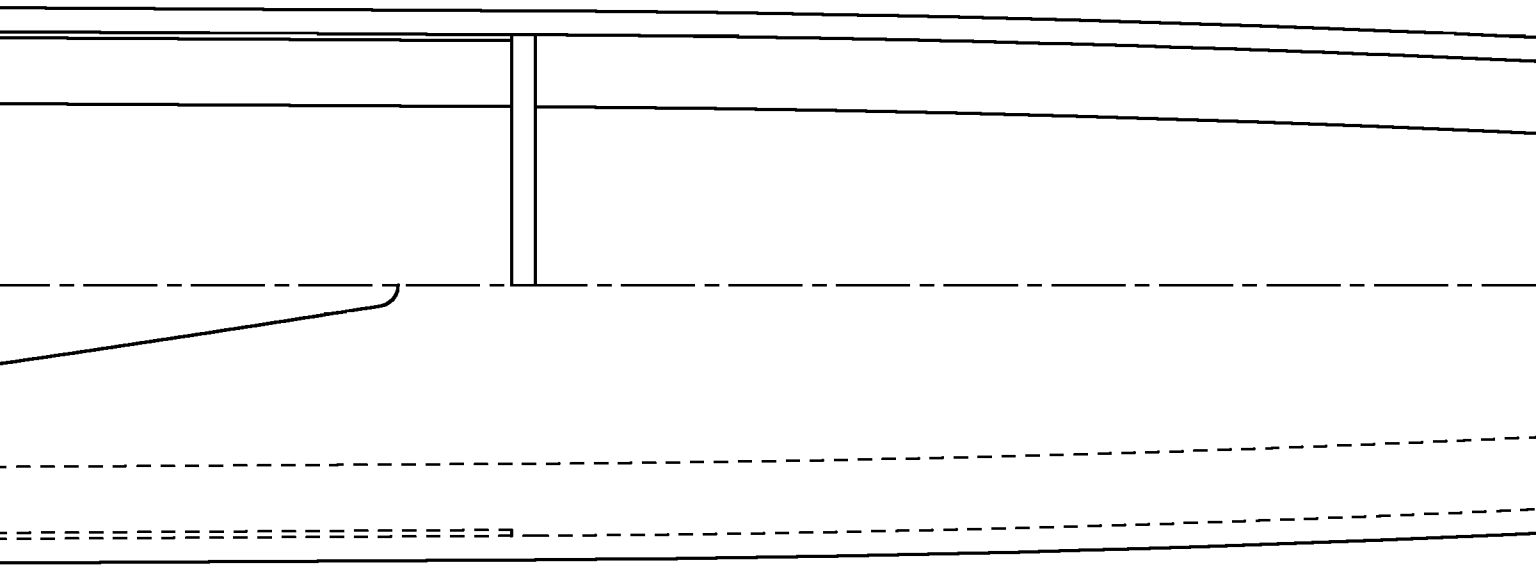
RIGHT SIDE TERMINATES AT F1

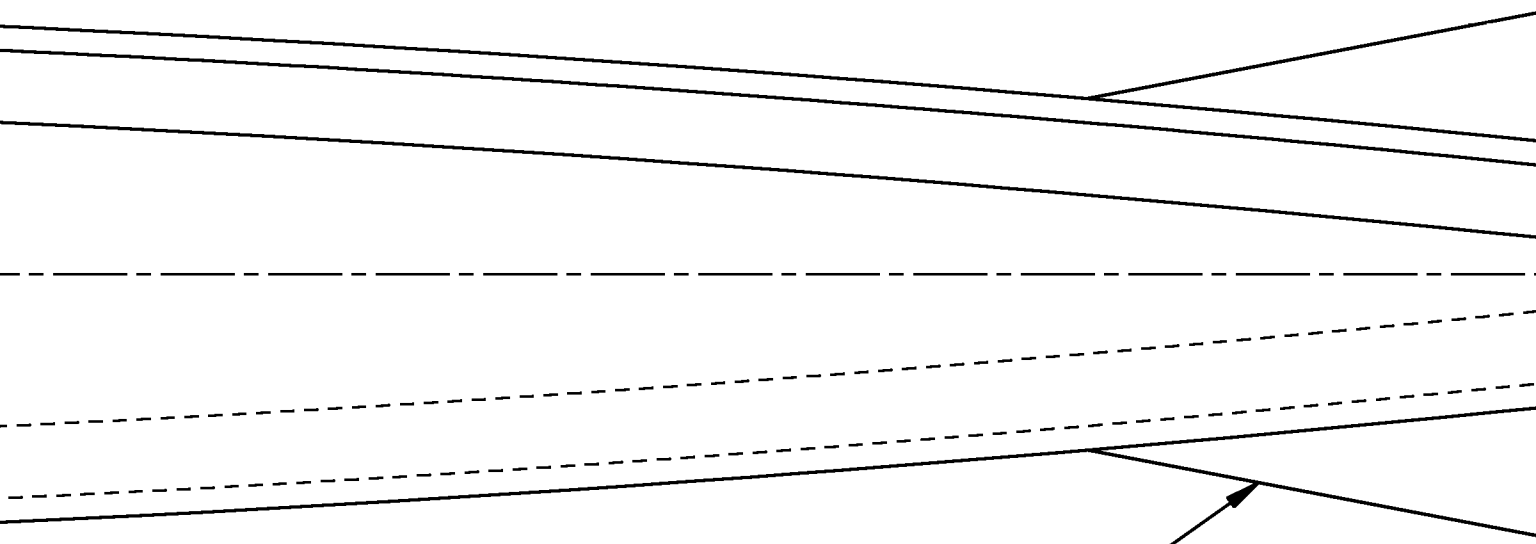
1/8" POPULAR PLY
HATCH HOLDDOWN



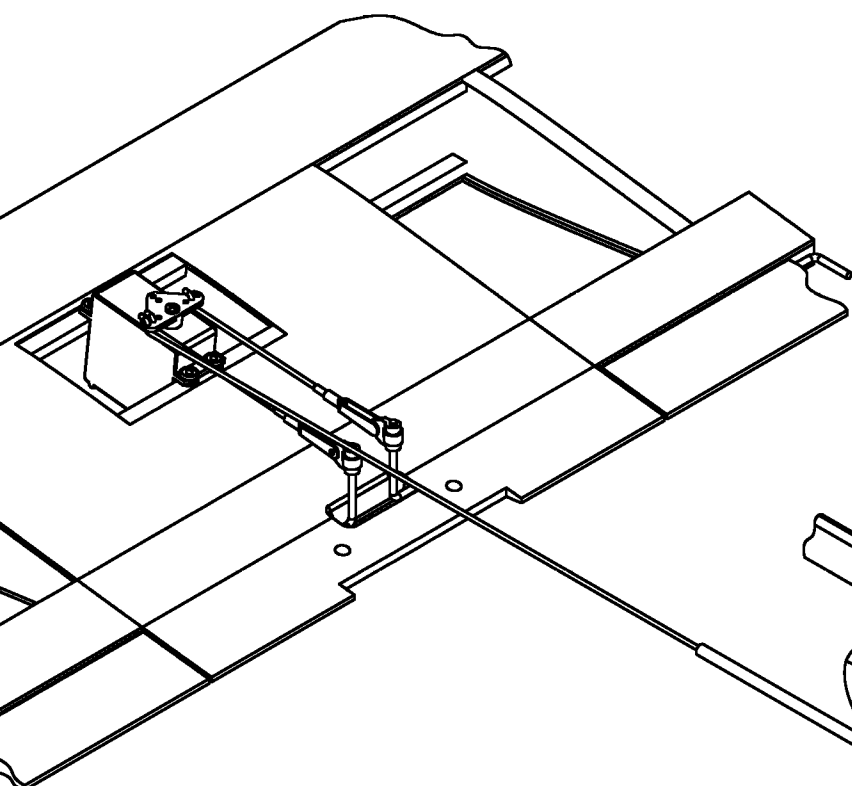


1/4" x 2" x 18"

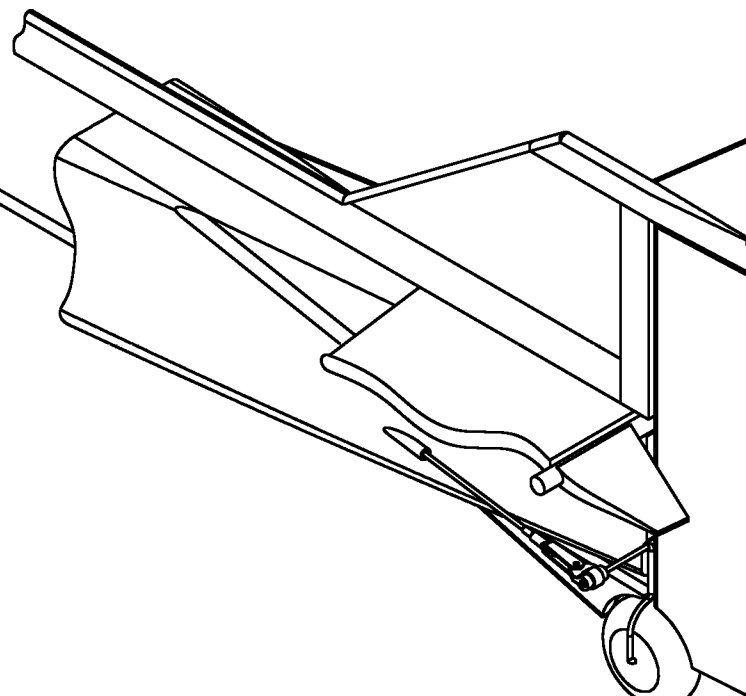


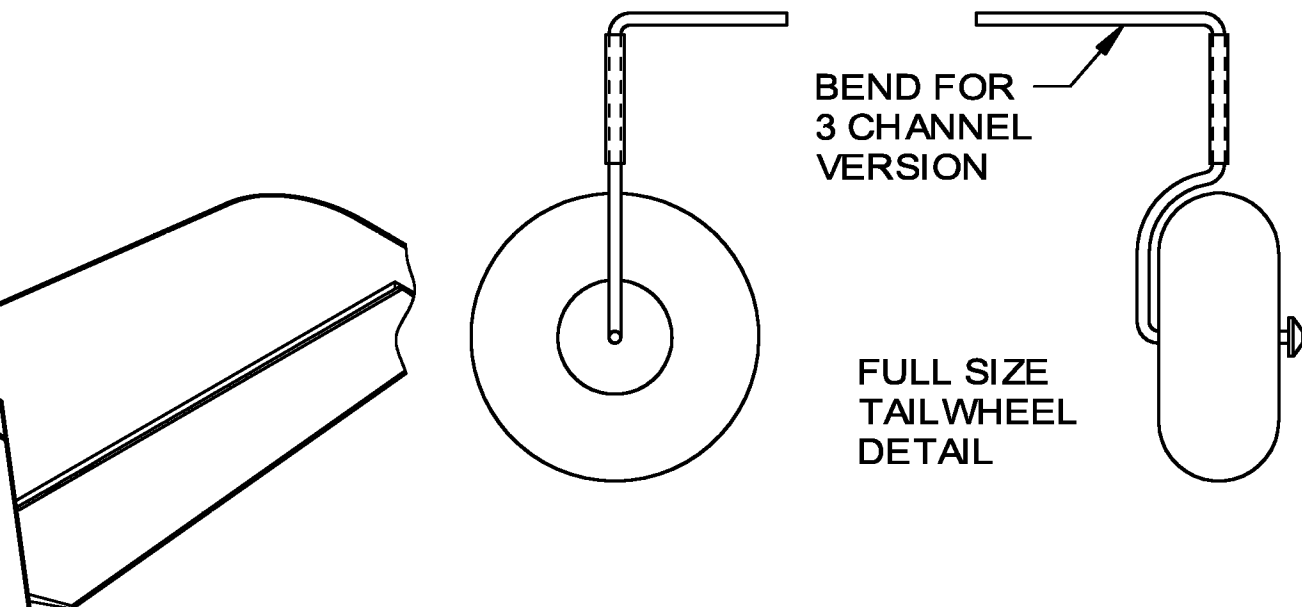
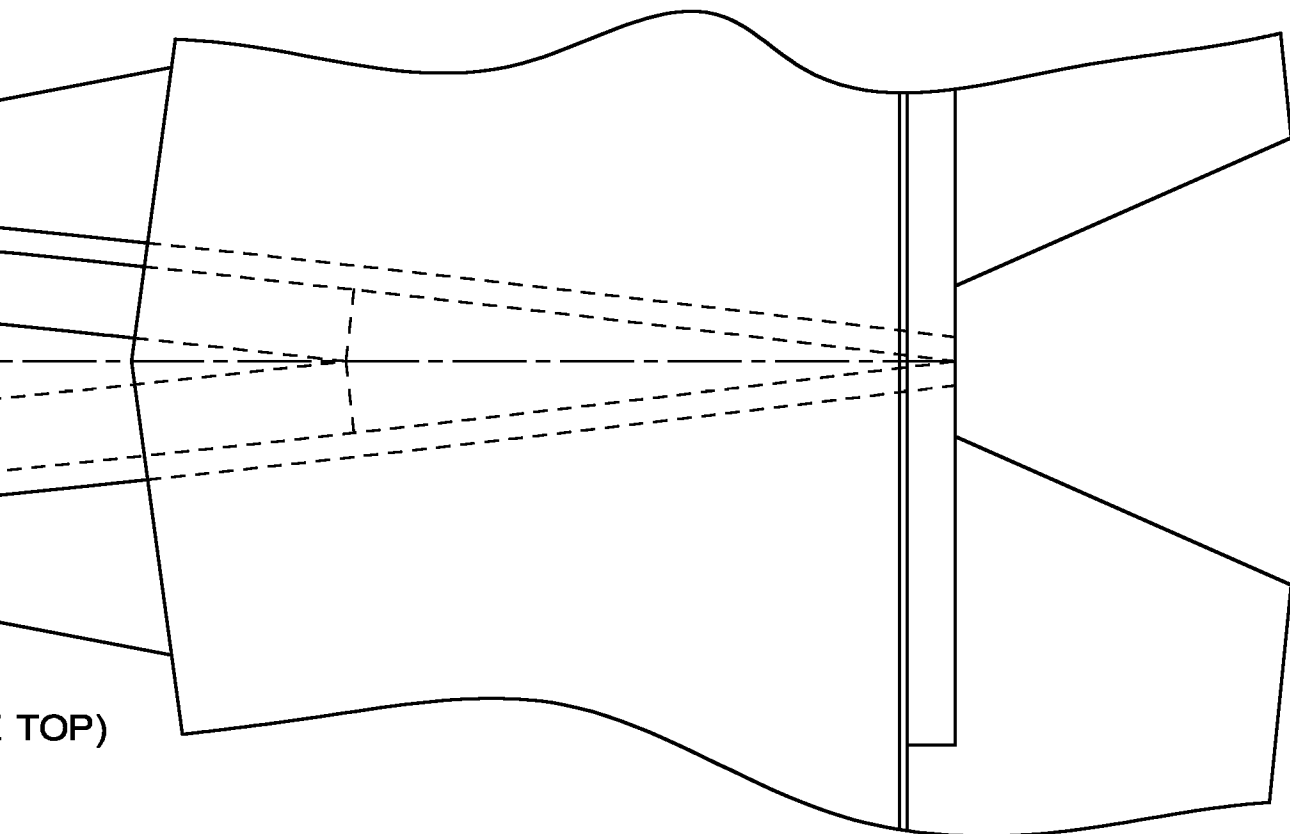


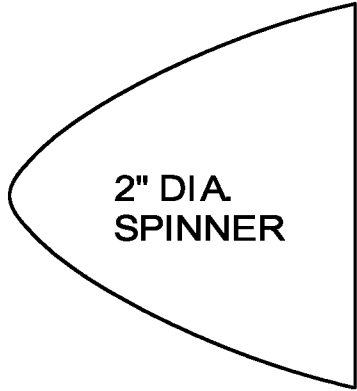
1/4" HORIZONTAL STRAKES
(CUT FROM SCRAP OFF OF FUSE)



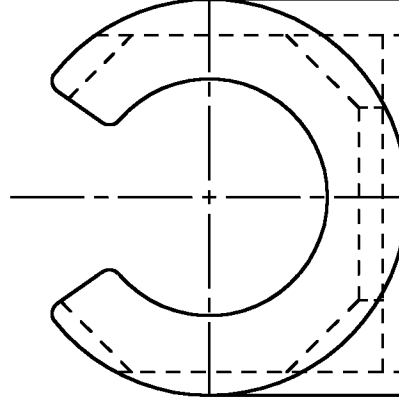
TAILWHEEL HOOKUP FOR THREE
CHANNEL FIXED RUDDER VERSION







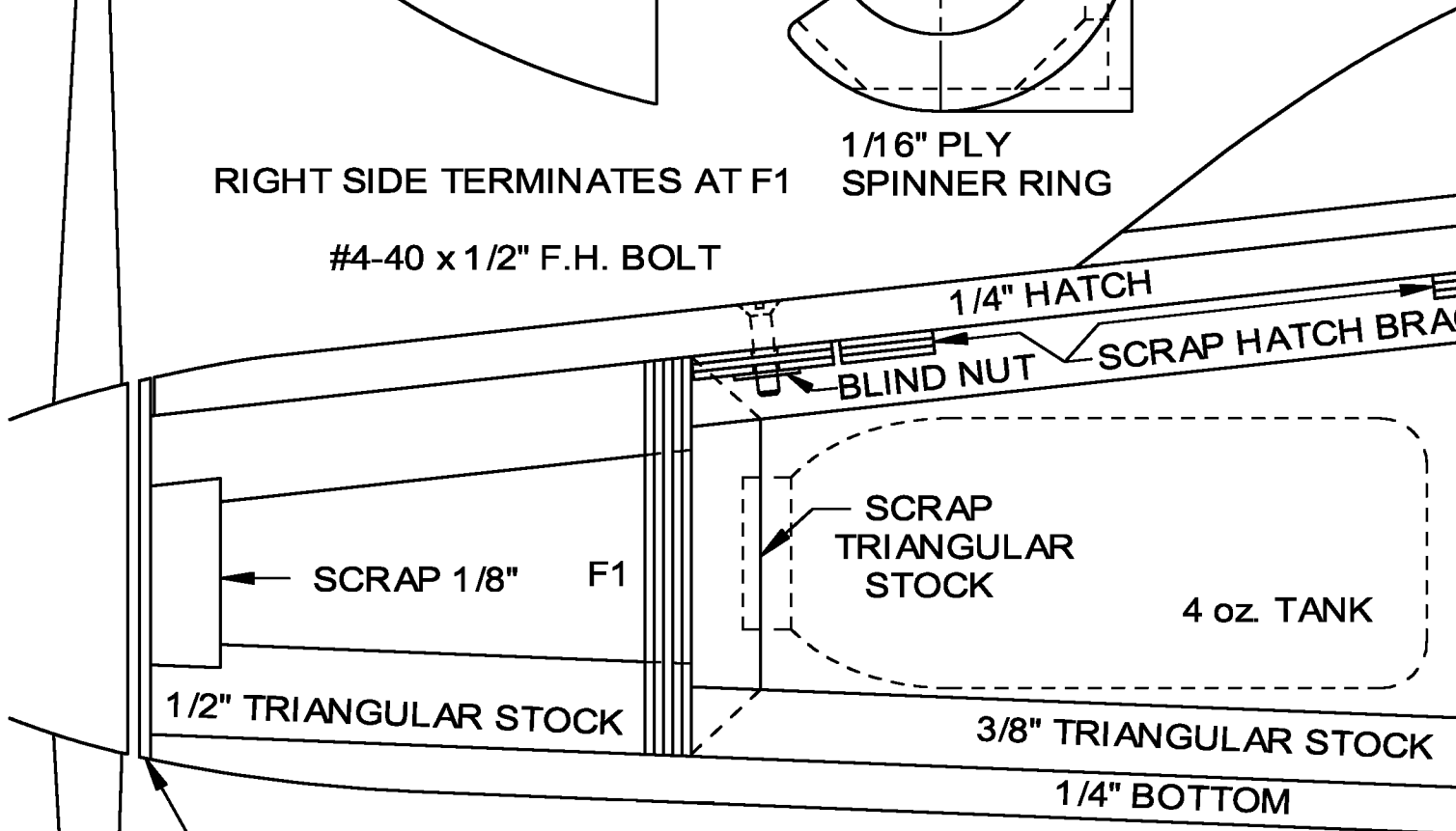
2" DIA.
SPINNER



1/16" PLY
SPINNER RING

RIGHT SIDE TERMINATES AT F1

#4-40 x 1/2" F.H. BOLT



1/4" HATCH

BLIND NUT

SCRAP HATCH BRA

SCRAP 1/8" F1

SCRAP
TRIANGULAR
STOCK

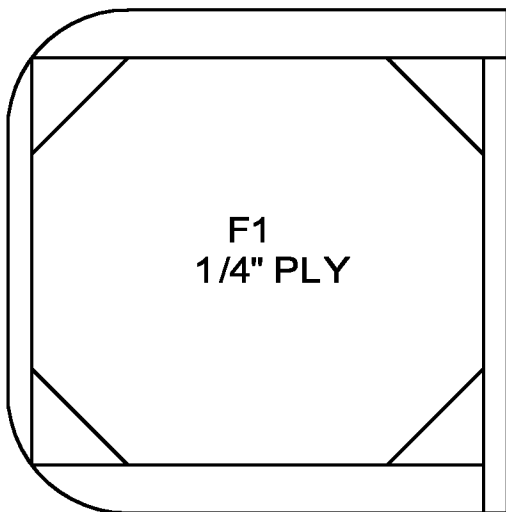
4 oz. TANK

1/2" TRIANGULAR STOCK

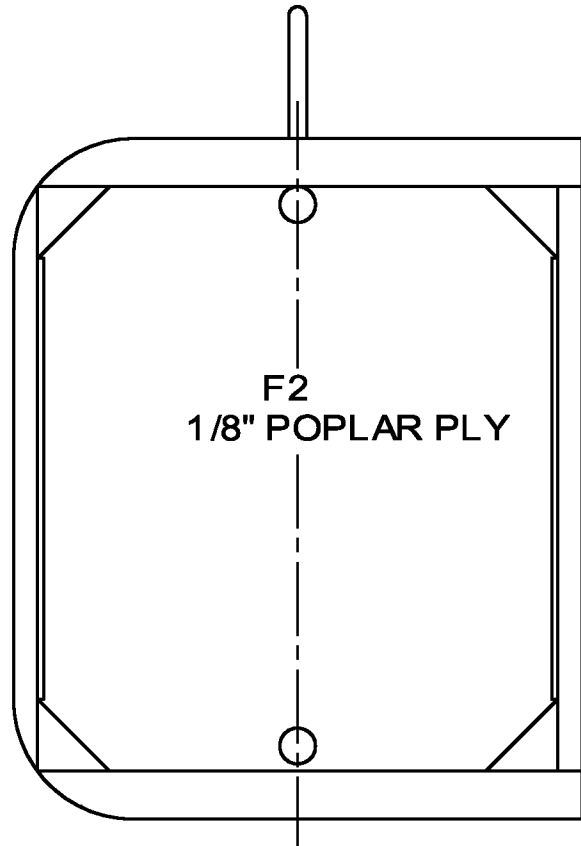
3/8" TRIANGULAR STOCK

1/4" BOTTOM

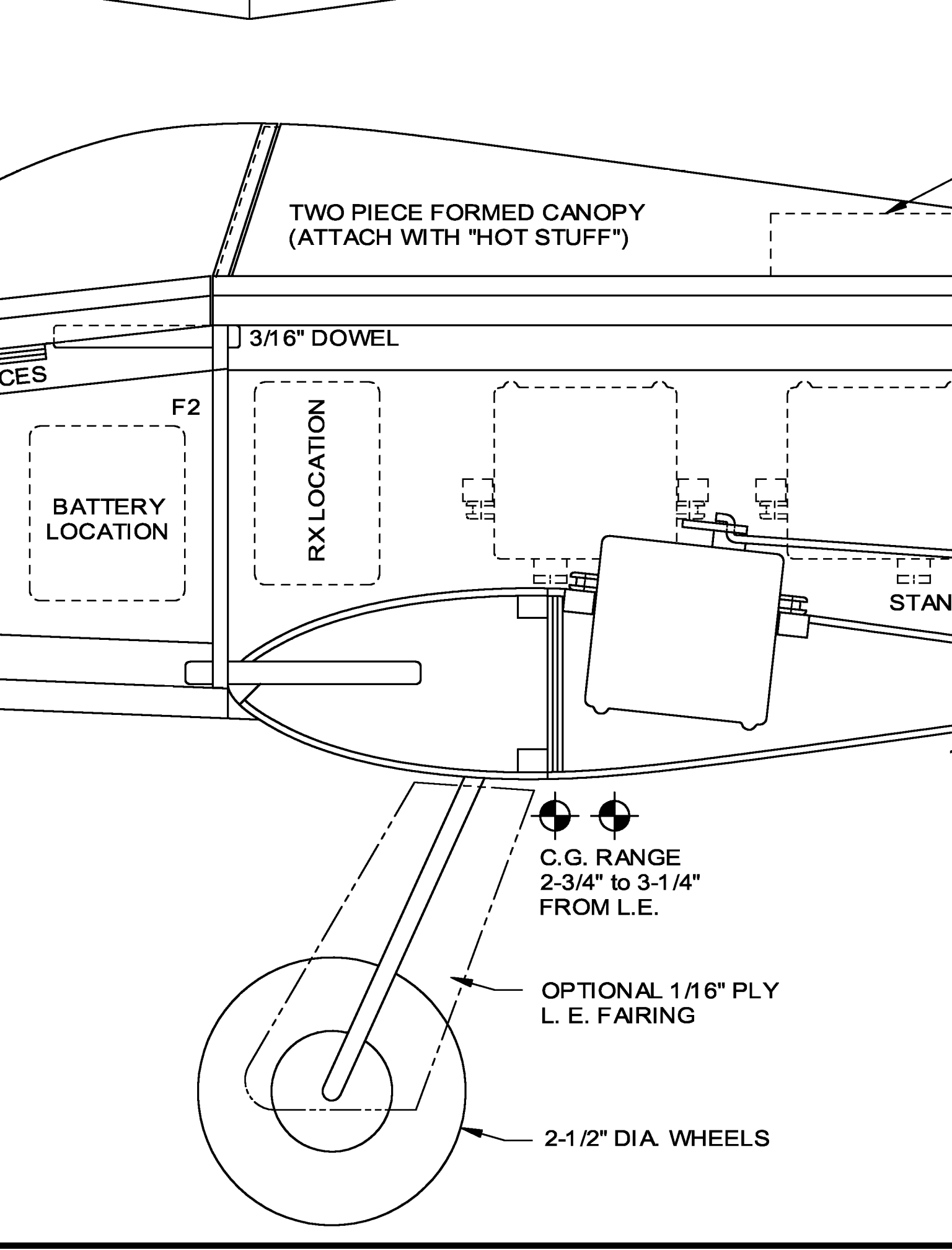
1/16" PLY SPINNER RING



F1
1/4" PLY



F2
1/8" POPLAR PLY



TWO PIECE FORMED CANOPY
(ATTACH WITH "HOT STUFF")

3/16" DOWEL

CES

F2

BATTERY
LOCATION

RX LOCATION

STAN

C.G. RANGE
2-3/4" to 3-1/4"
FROM L.E.

OPTIONAL 1/16" PLY
L. E. FAIRING

2-1/2" DIA. WHEELS

SLOT FOR DORSAL

3/16" x 11/16" x 22" D

1/4" TOP

3/8" TRIANGULAR STOCK

1/32" PLY DOUBLER
BETWEEN F1 AND F3

F3

1/8" SIDES

STANDARD AILERON
LINKAGE

1/4" PLY, DRILL AND TAP FOR WING BOLT (#10-32)

3/16" SQ.

1/16" PLY PLATE

#10-32 NYLON BOLT

SPAN: 46 in.
AREA: 408 sq. in.
LENGTH: 40 in.
WEIGHT: approx. 3
FUNCTIONS: 3 or 4 C
ENGINE: .23 to .25

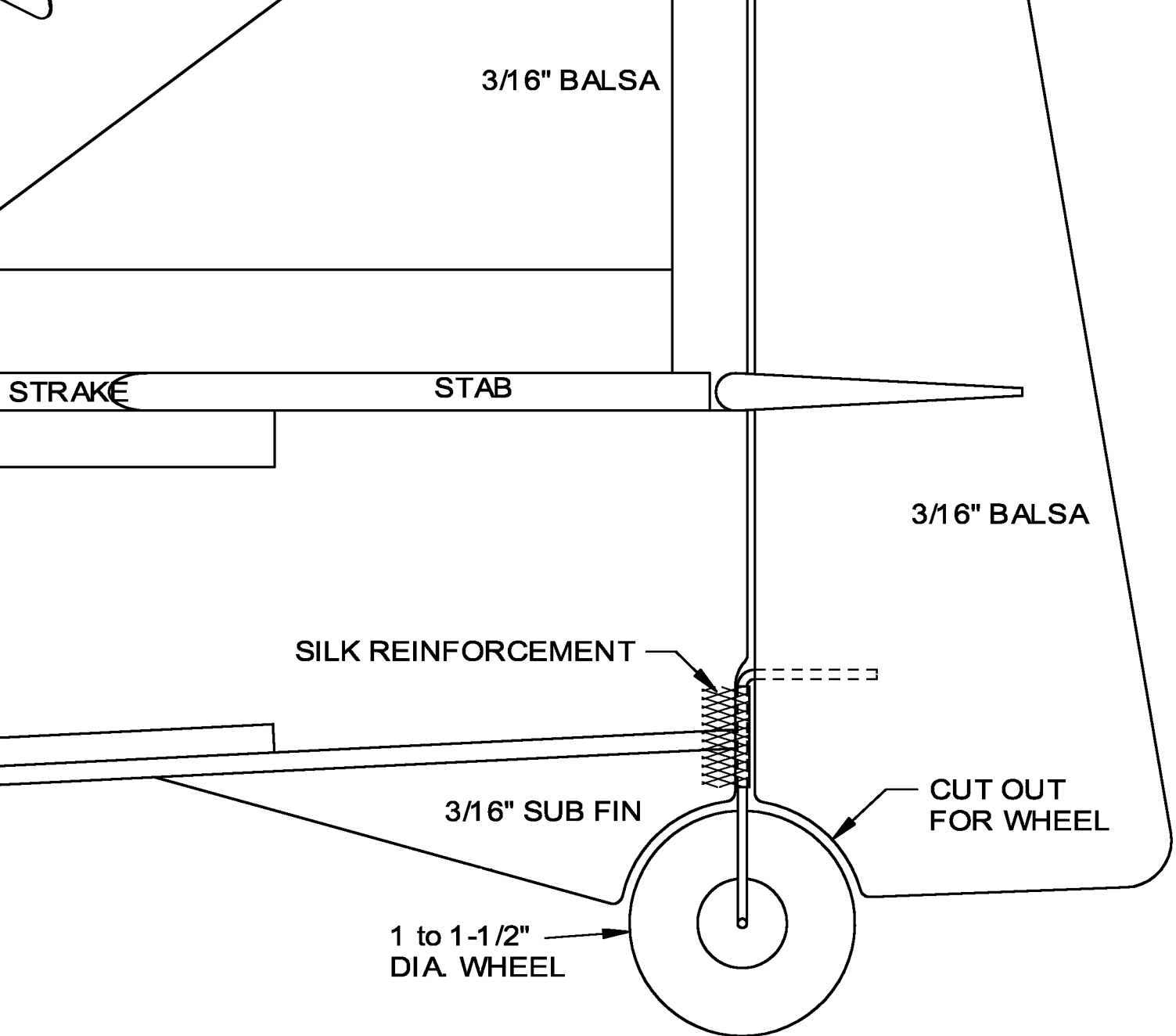
DORSAL

HORIZONTAL

1/8" CROSS GRAIN

lbs. all up
Channels

**SUPER
PACER**



Designed by
OWEN KAMPTEN

1975 BY

ACE R/C Inc.

BOX 511, 116 W. 19TH ST. HIGGINSVILLE, MO, 64037