

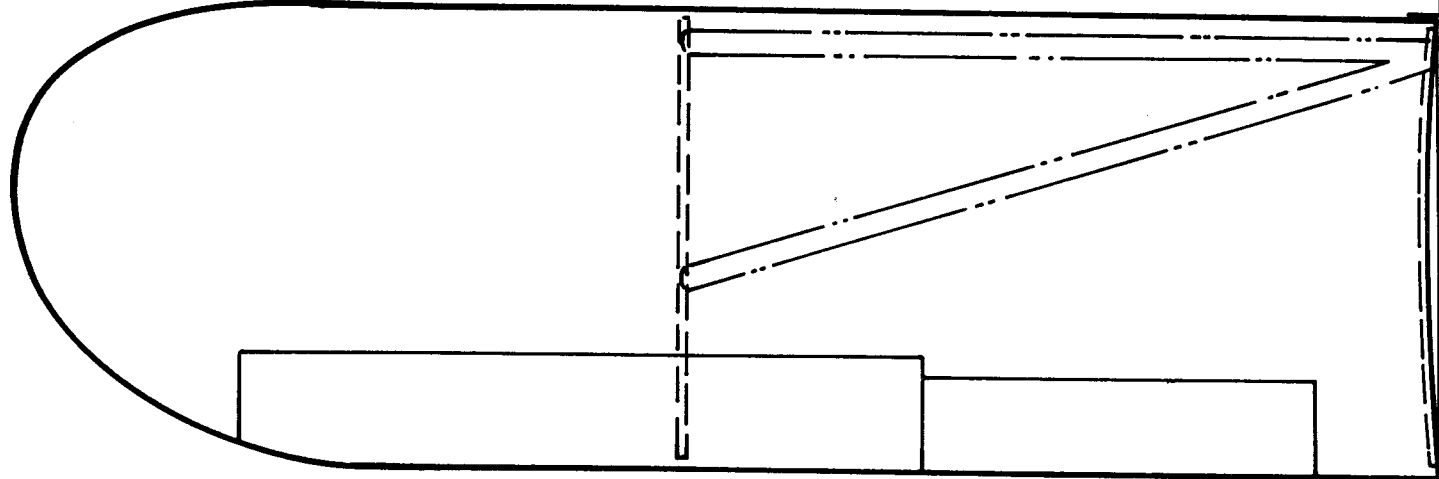
NOTES: • UNLESS OTHERWISE NOTED ALL PIECES ARE MADE FROM 1/32ND SHEET BALSA.

• GRAIN DIRECTION SHOULD RUN LENGTHWISE ON ALL PIECES EXCEPT FUSELAGE BOTTOM SHEETING AND FORMERS WHERE THE GRAIN SHOULD CROSS THE FUSELAGE.

• DOTTED AREAS INDICATE COLOR TRIM

PIPER PA -25 PAWNEE CROP-DUSTER

A SHEET BALSA RUBBER POWERED SCALE MODEL BY *Walt Mooney* 5-12-65



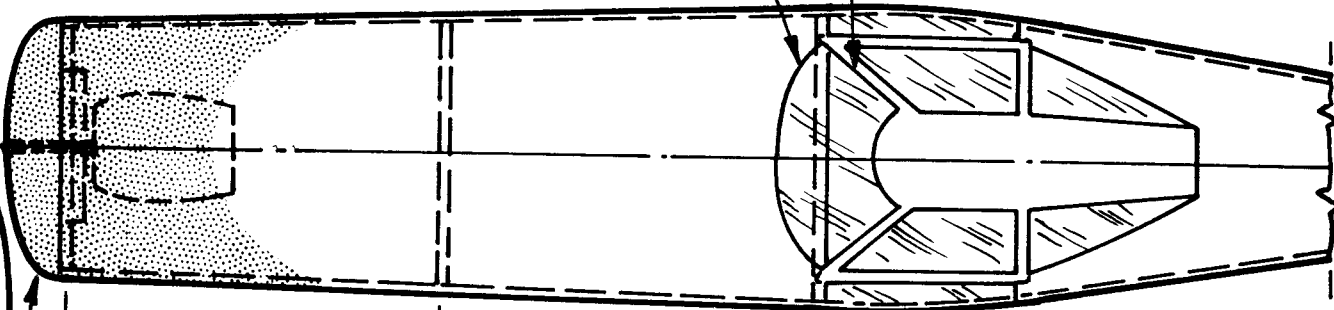
LEFT WING—NOTE SLANT OF ROOT RIB TO GIVE PROPER

RIB 1/16TH SHEET 4 REQ'D.



LANDING GEAR FAIRING 2 REQ'D.

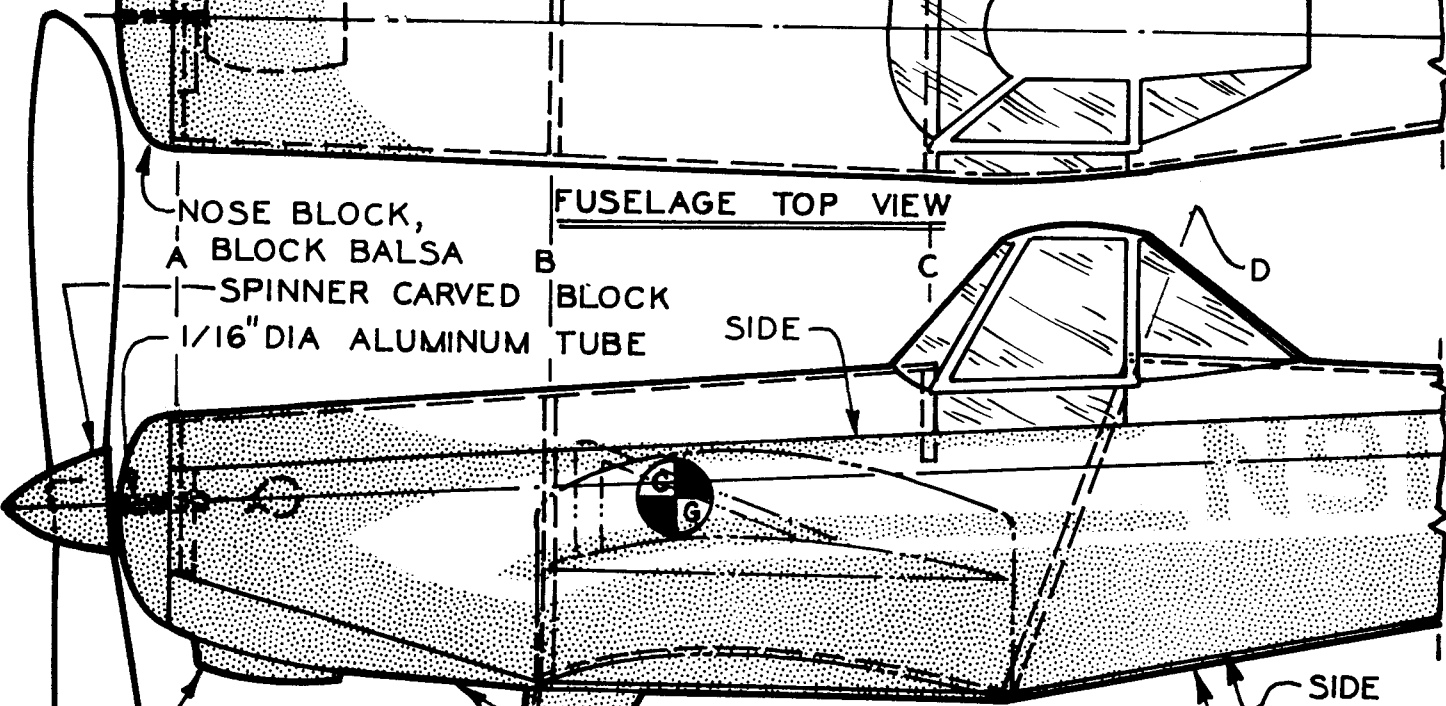
WING STRUTS
L.H. SHOWN R.H. OPPOSITE
CANOPY, THIN PLASTIC
CANOPY FRAMING



FUSELAGE TOP VIEW

NOSE BLOCK,
A BLOCK BALSA
SPINNER CARVED
1/16" DIA ALUMINUM TUBE

SIDE



BOTTOM BLOCK,
BLOCK BALSA
CARB. INLET
PROPELLER,
COM'L. 6" DIA.
CUT DOWN

3/4" DIA.
WHEELS

WIRE
LANDING GEAR
PATTERN 1 REQ'D.

SIDE
BOTTOM
SKIN