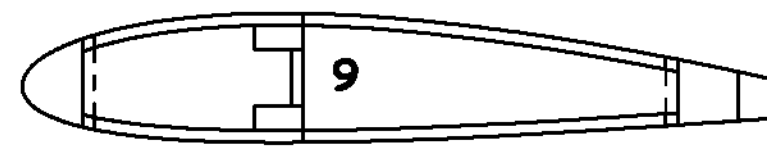
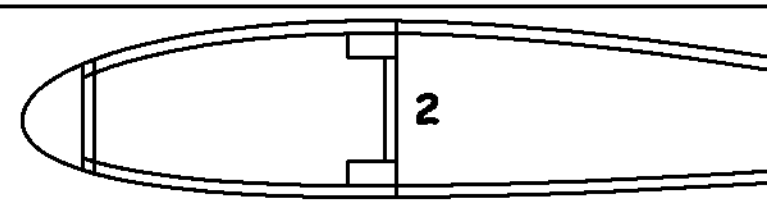
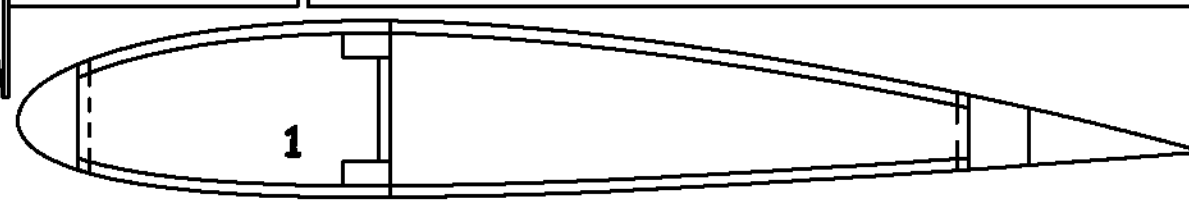
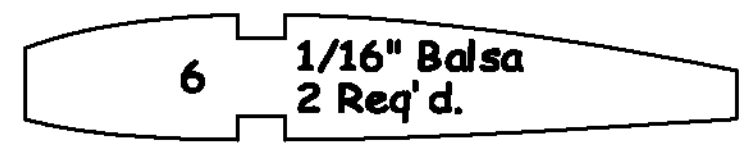
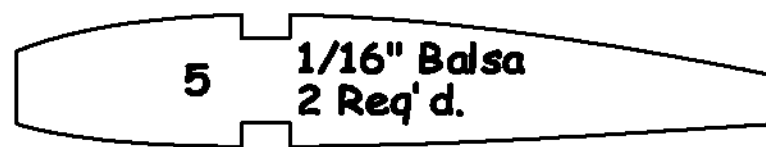
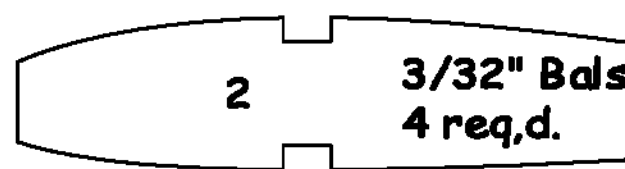
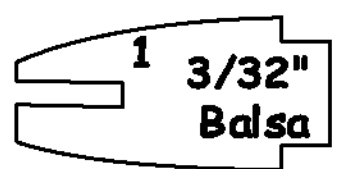
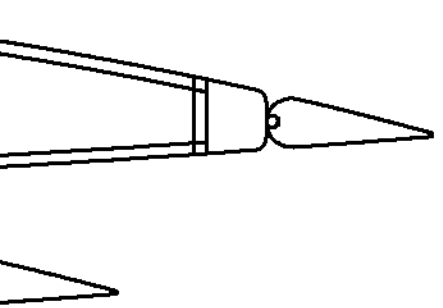
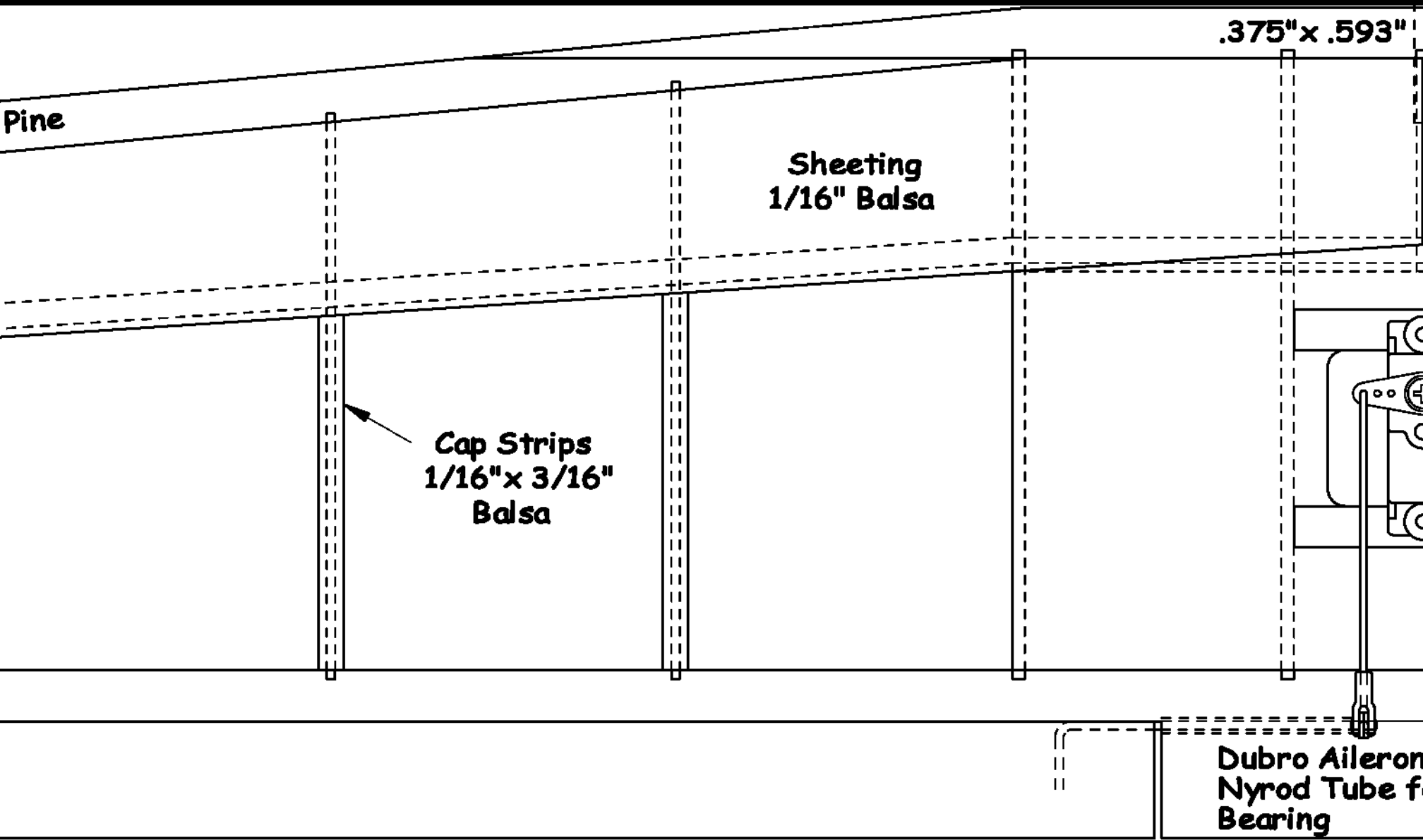
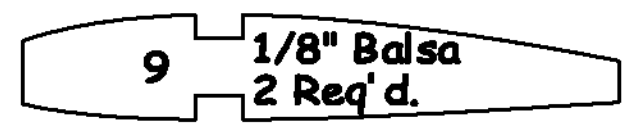
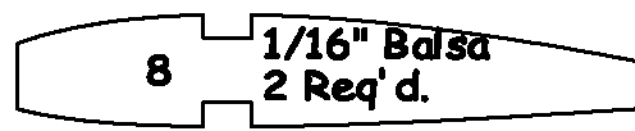
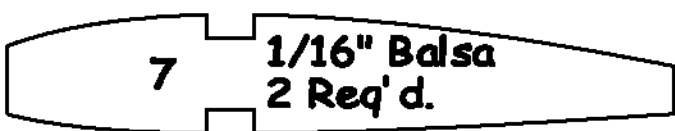
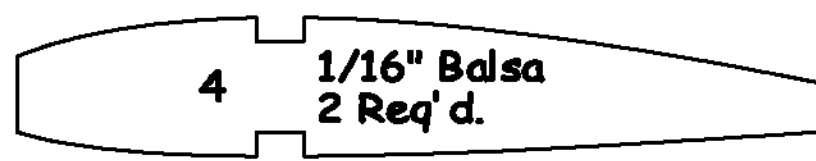
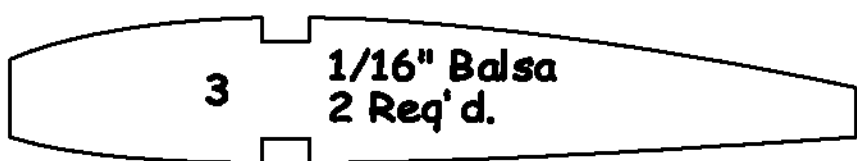
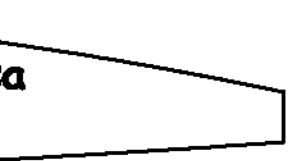
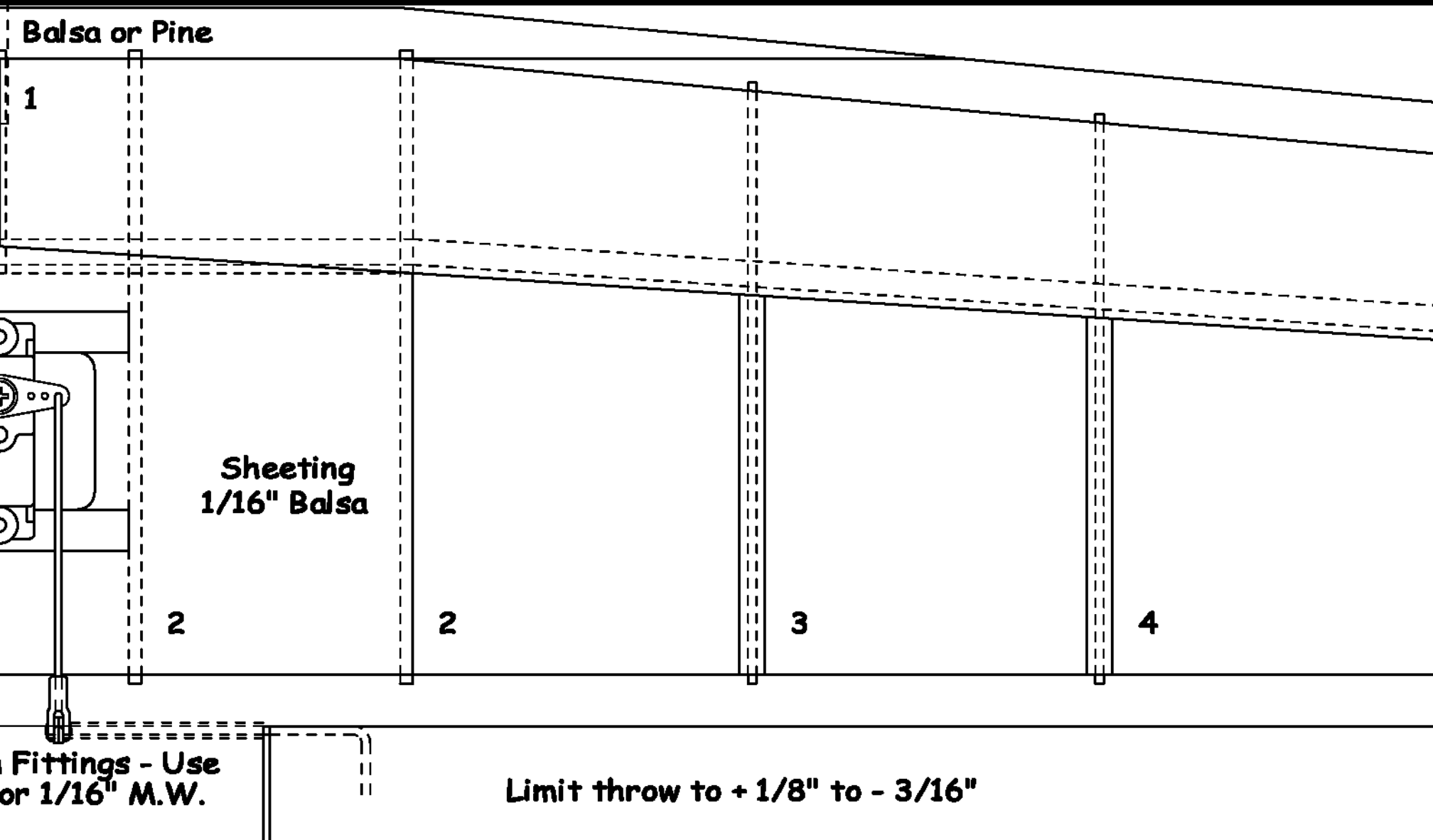
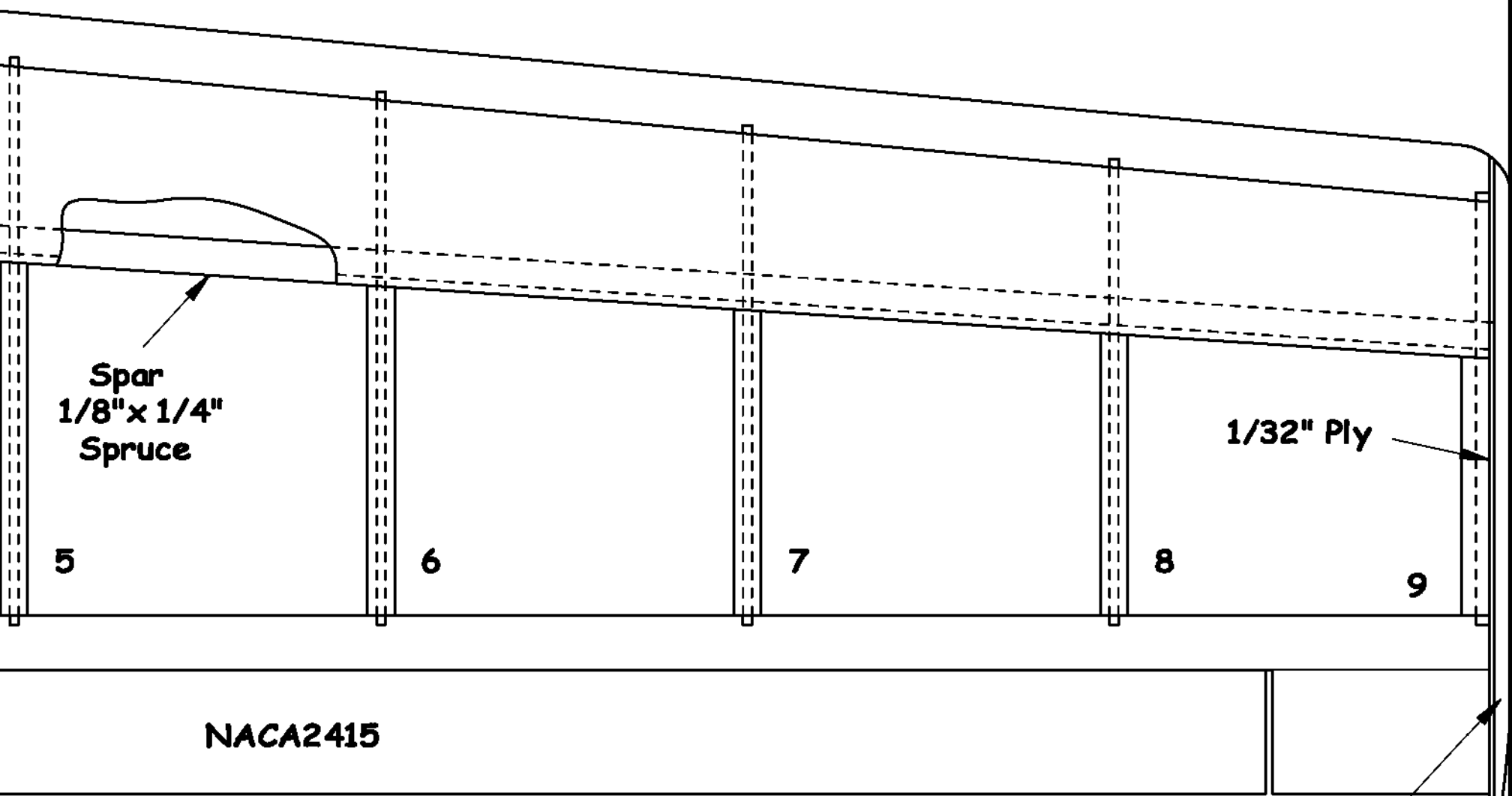


**Aileron - .298" x .861" Balsa**









Spar  
1/8" x 1/4"  
Spruce

1/32" Ply

5

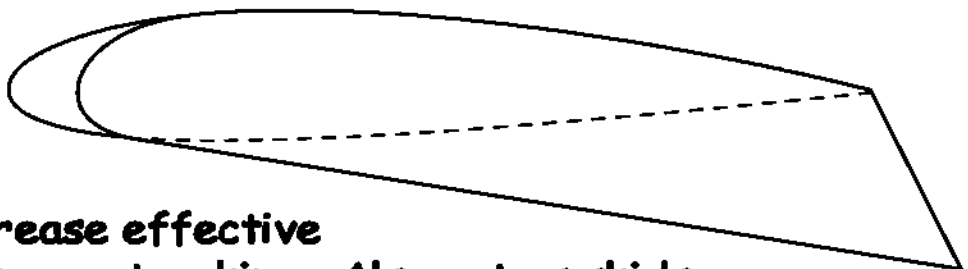
6

7

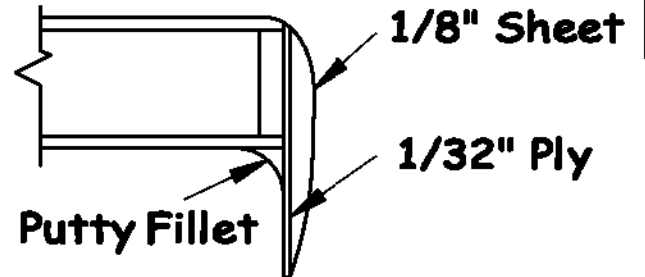
8

9

NACA2415



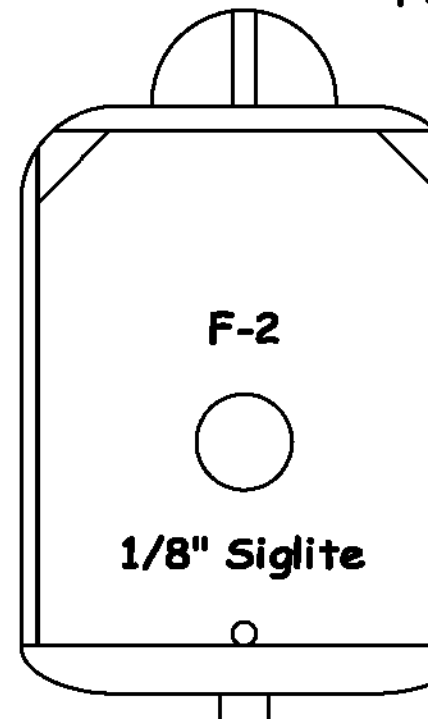
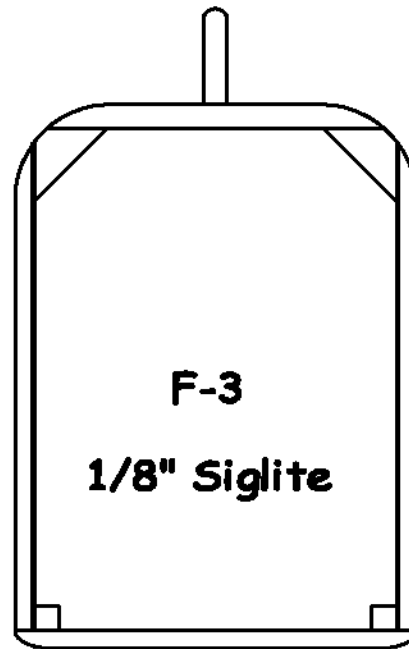
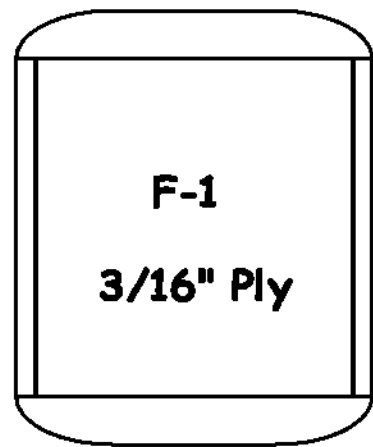
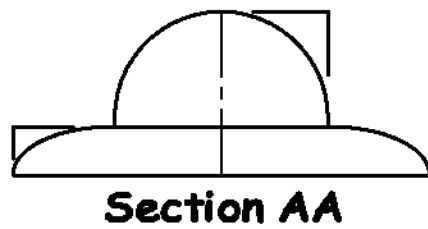
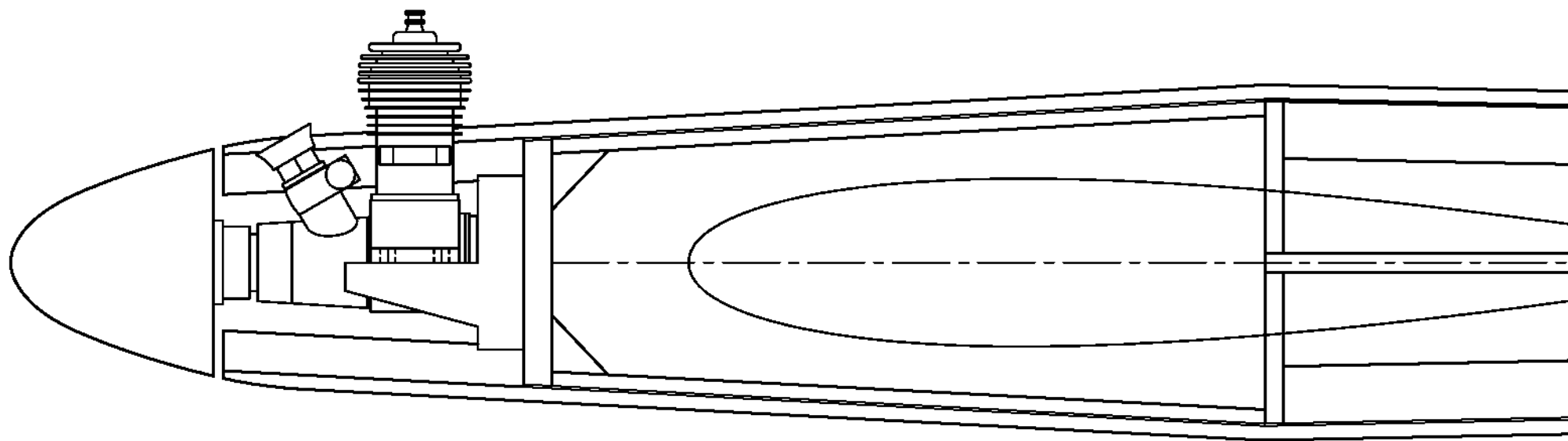
Tips increase effective span, improve tracking. Also act as skids.



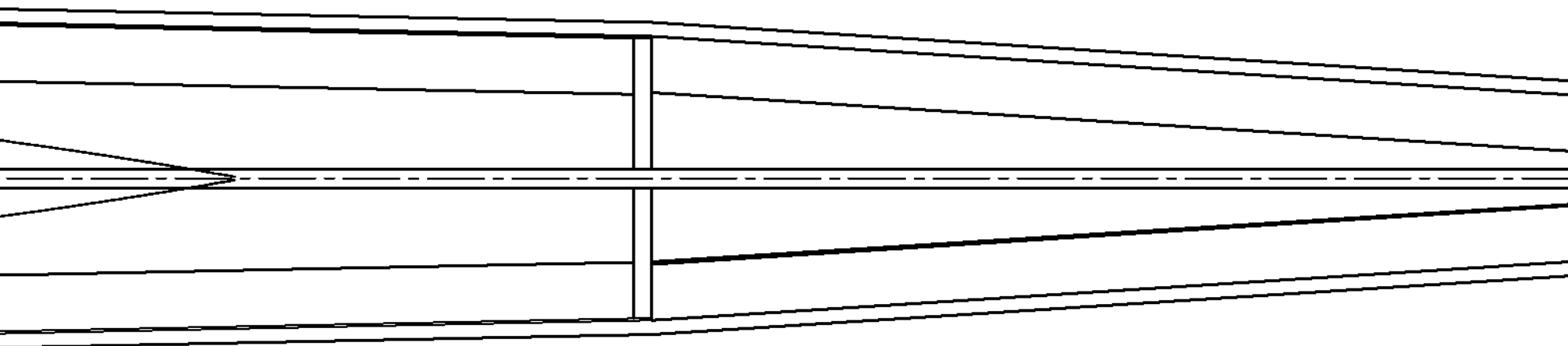
1/8" Sheet

1/32" Ply

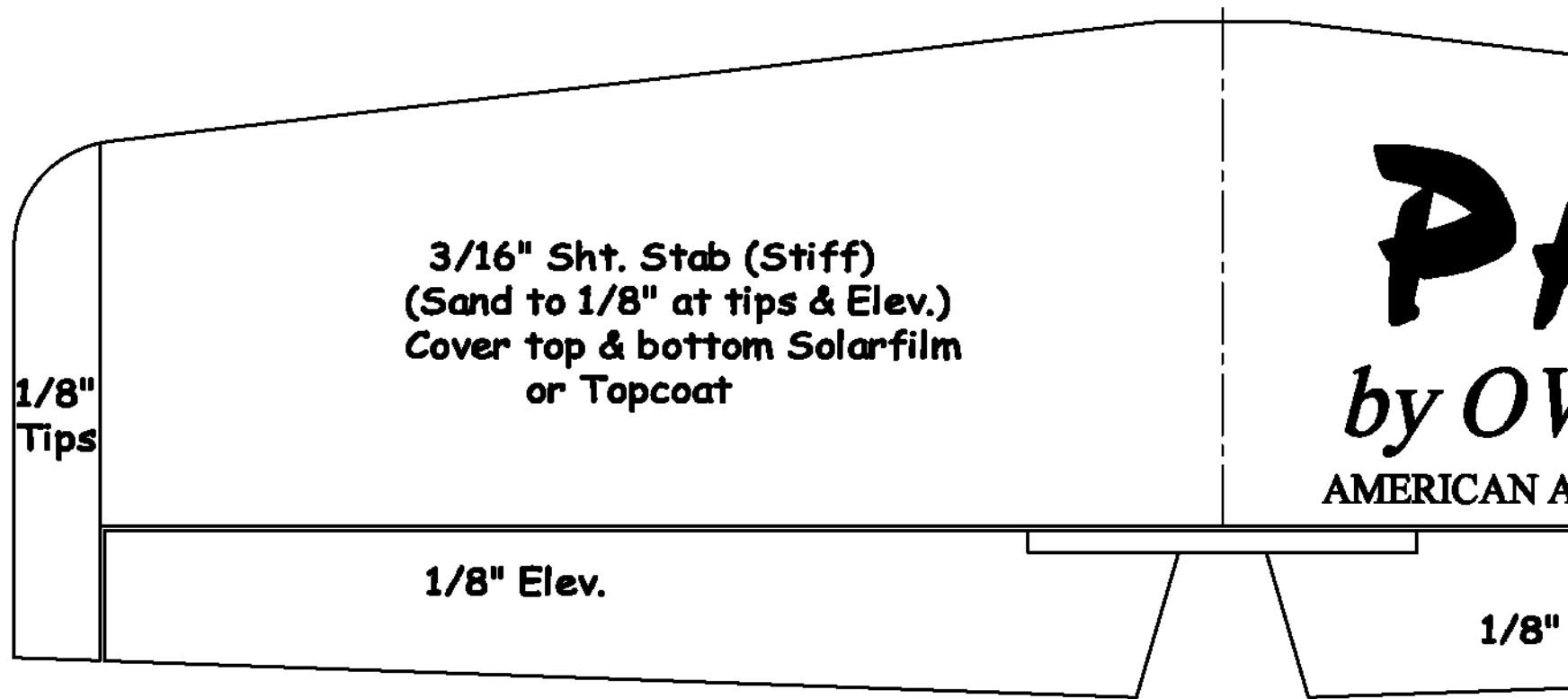
Putty Fillet



So  
F



ft Block  
airing



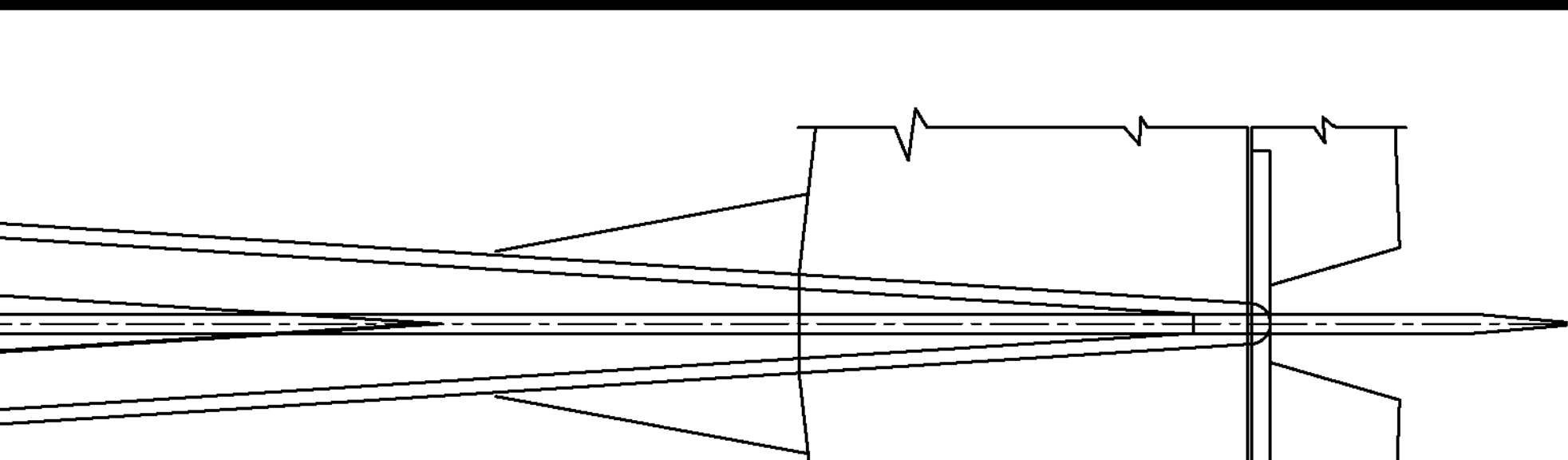
1/8"  
Tips

3/16" Sht. Stab (Stiff)  
(Sand to 1/8" at tips & Elev.)  
Cover top & bottom Solarfilm  
or Topcoat

1/8" Elev.

1/8"

**PV**  
*by O.V.*  
AMERICAN A



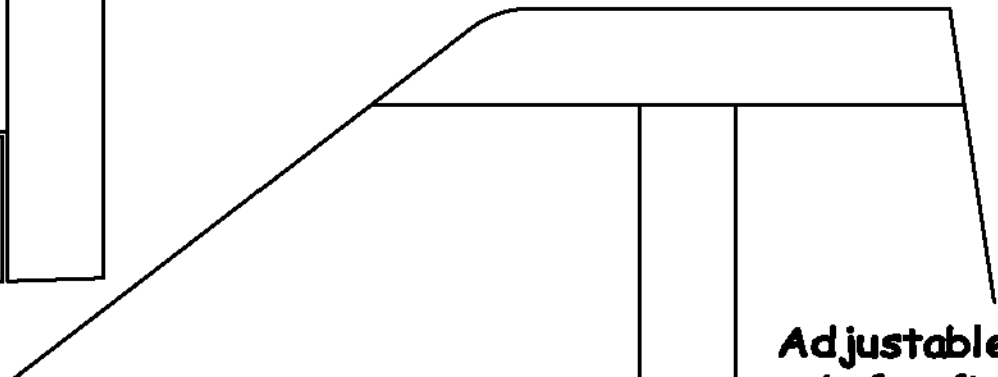
1/8" Stab. Stakes  
Glue to Fuse. after  
Stab is installed. 0°

**ACER**

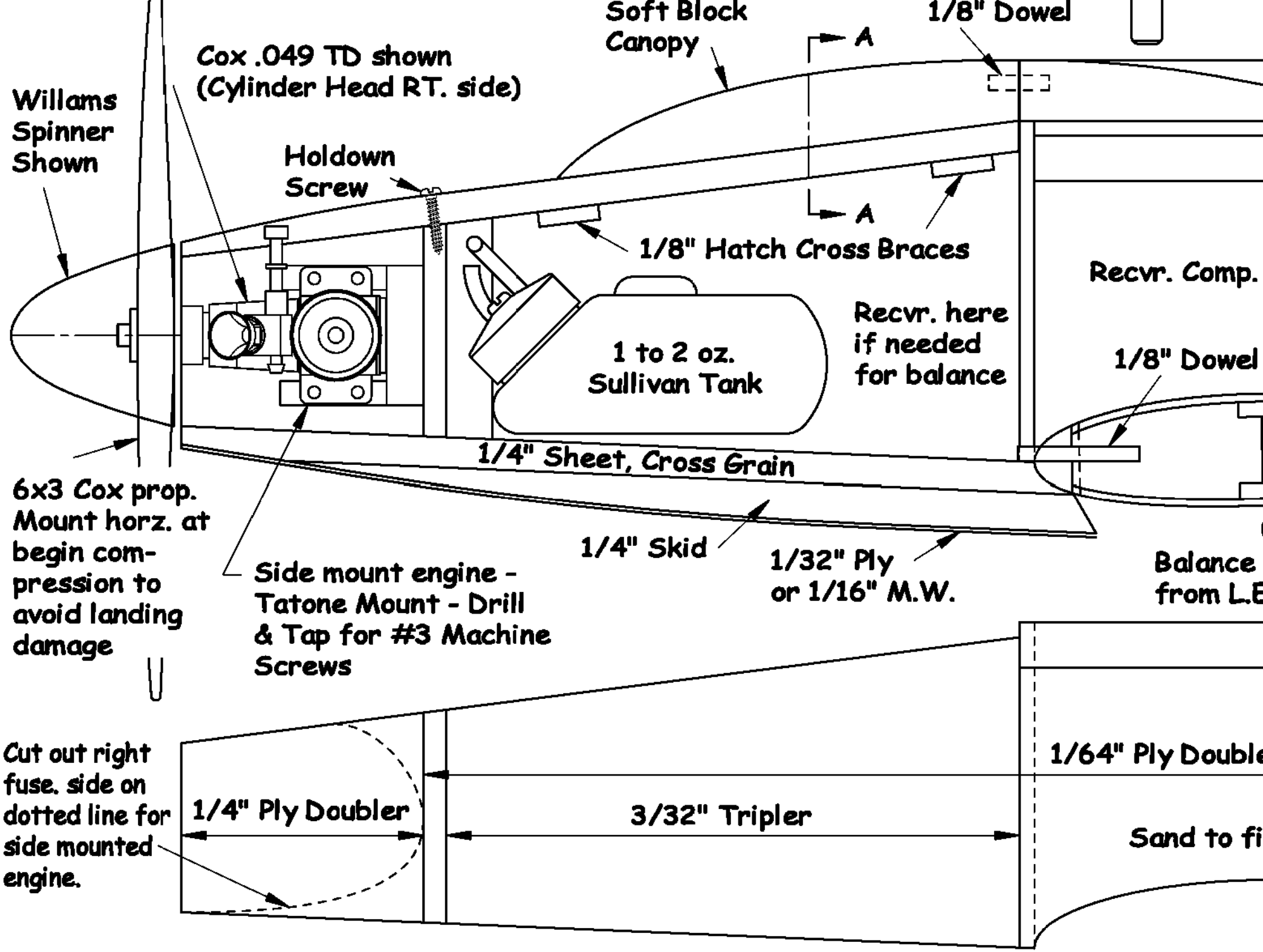
*WEN KAMPEN*

AIRCRAFT MODELER AUGUST, 1974

Dowel



Adjustable trim





Full Length 1/8" Dorsal Fin

1/8" Top

Tape Elev.  
Servo to  
RT. Fuse.  
Side

Elev. Pushrod Lt. Wt. Nyrod

Aileron  
Servo

Hardwood Block &  
Sht Metal Screw

3/32" Crossgrain

2" to 2-1/4"

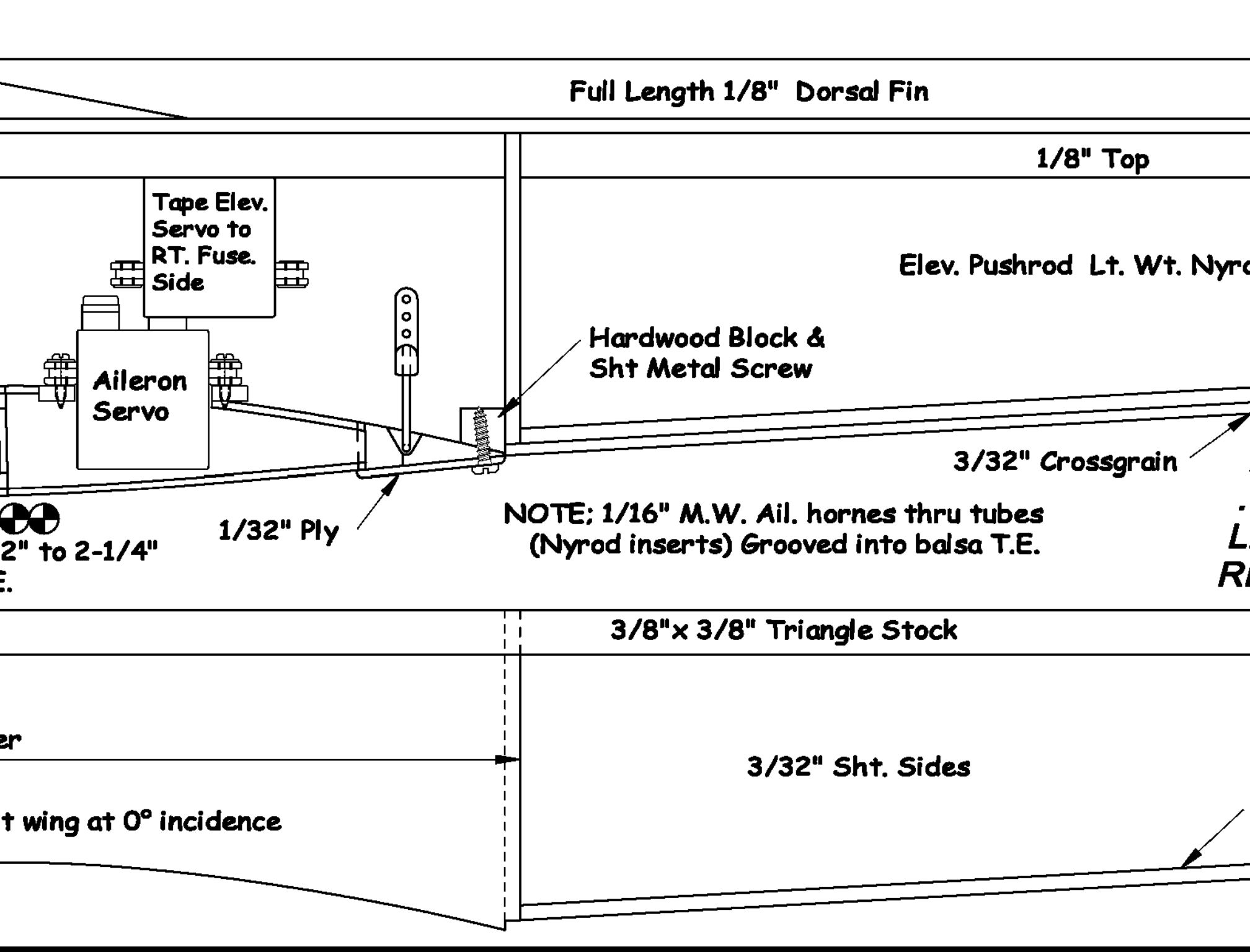
1/32" Ply

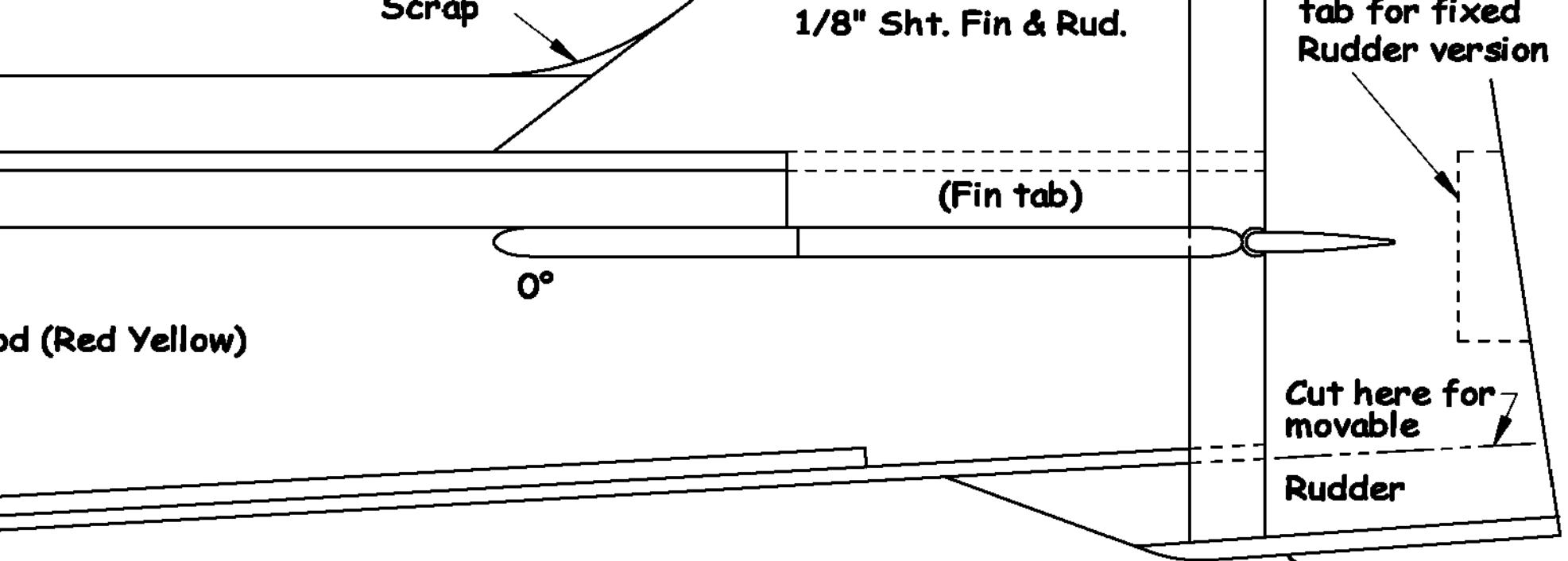
NOTE; 1/16" M.W. Ail. hornes thru tubes  
(Nyrod inserts) Grooved into balsa T.E.

3/8" x 3/8" Triangle Stock

3/32" Sht. Sides

t wing at 0° incidence





**A UNIQUE 1/2 A PATTERN DESIGN FOR  
 049 -.051 COX T.D. ENGINES. 2-3 CHAN.  
 LITE-WT. DIGITAL R/C. SPAN - 42"  
 READY TO FLY AT 20 - 22 OUNCES**

**Note: Full length rudder post  
 cutout for stab after fuse. assy.**

