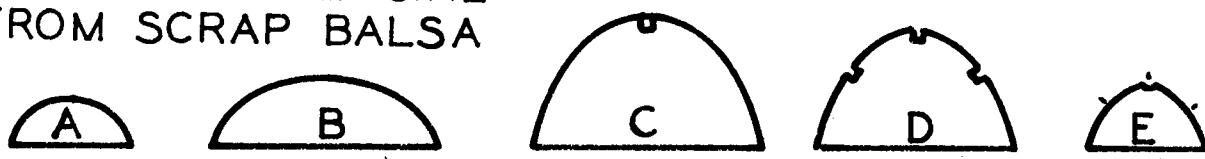
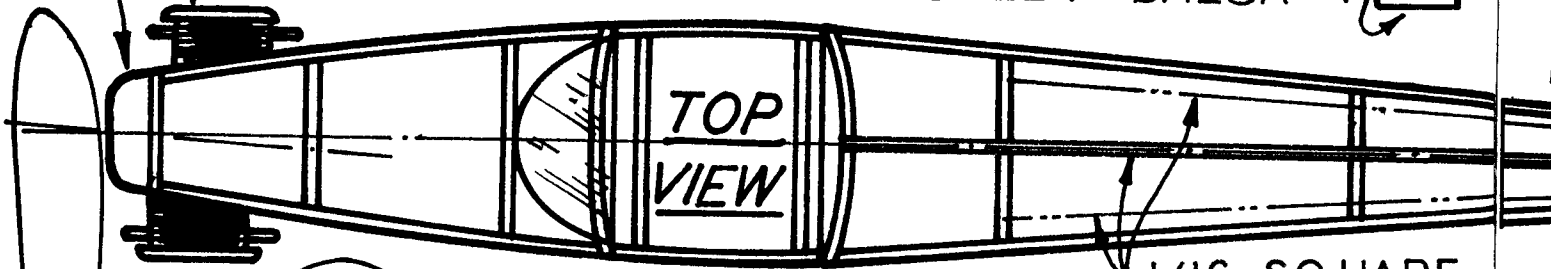


TRAILING EDGE $1/16 \times 1/8$

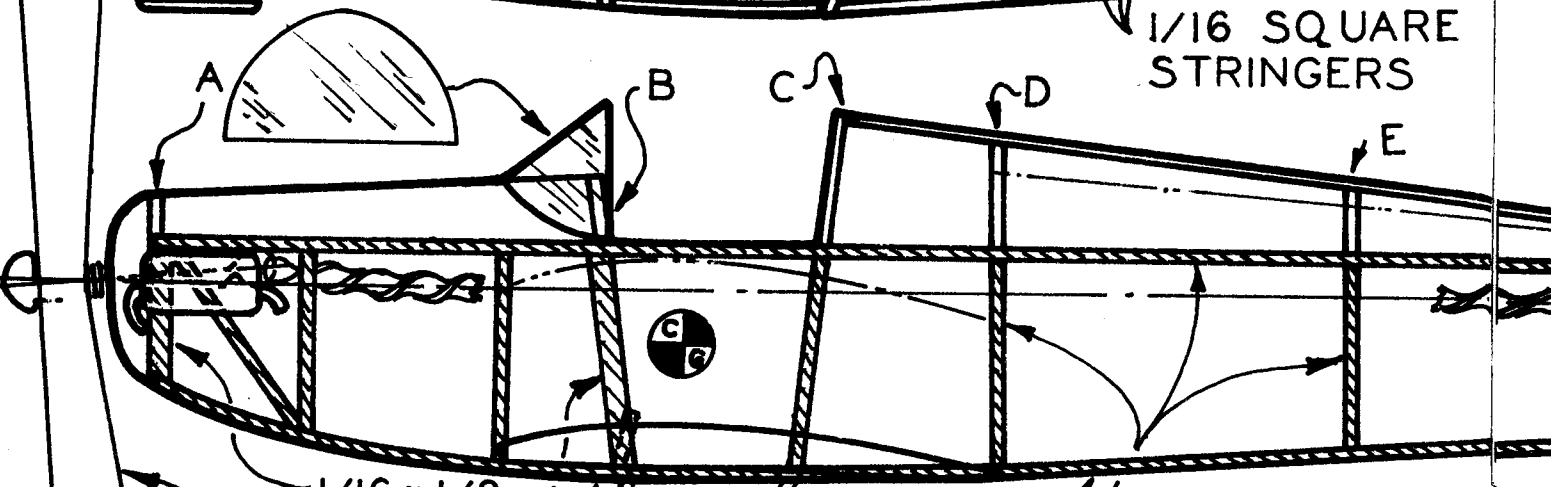
MAKE DUMMY ENGINE FROM SCRAP Balsa



ALL FORMERS & RIBS $1/16$ SHEET Balsa



$1/16$ SQUARE STRINGERS



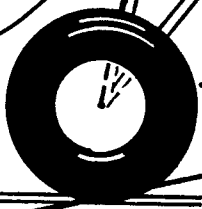
SIDE VIEW

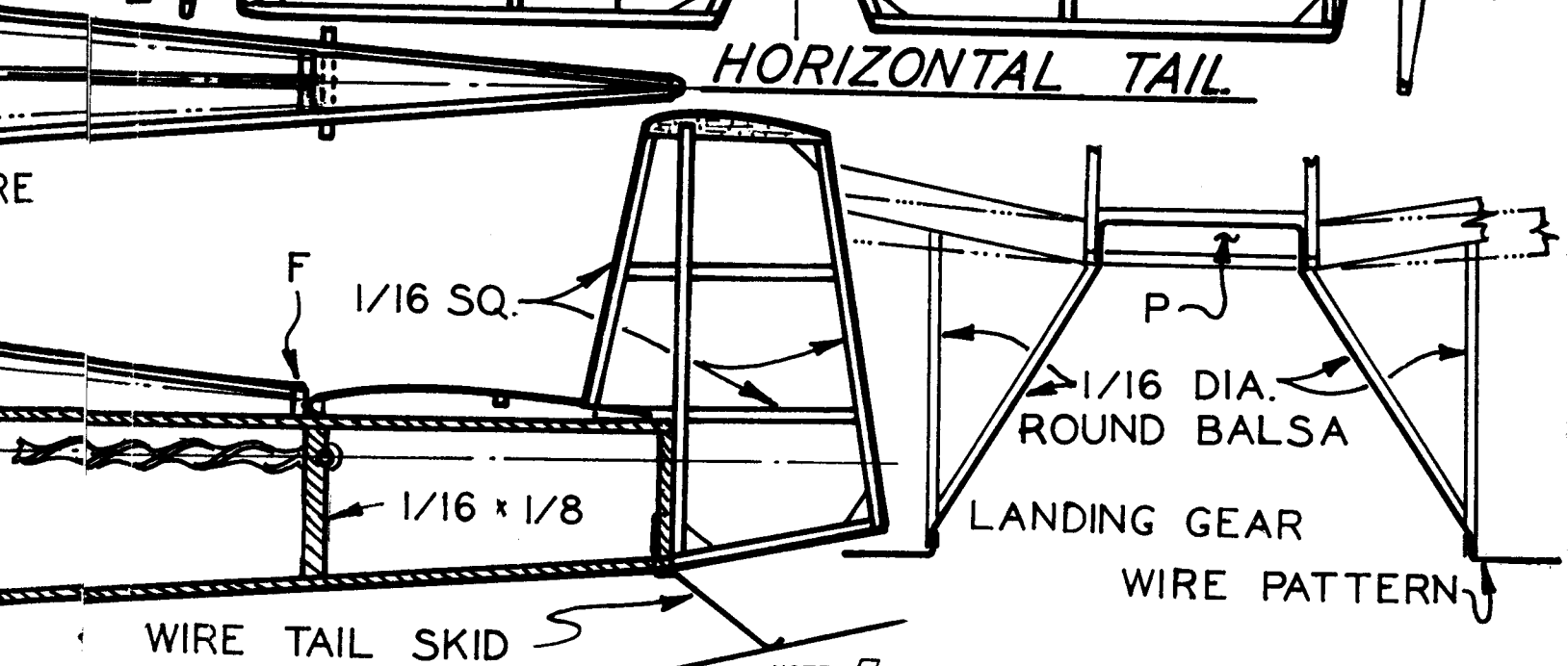
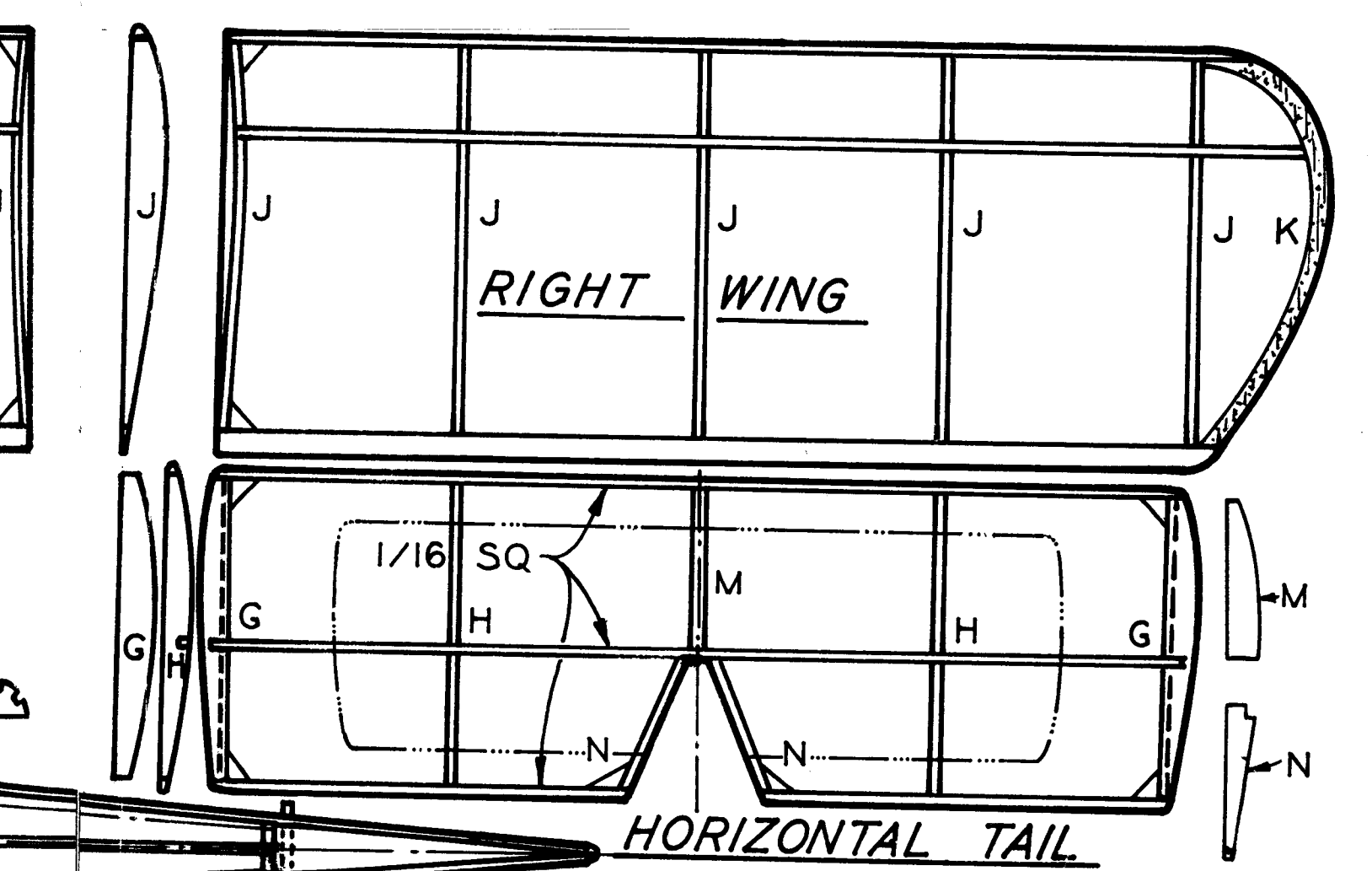
$5\frac{1}{2}$ " $1/16 \times 1/8$

COMMERCIAL PROPELLER

P- $1/16$ TH

1" DIA. WHEELS





NOTES: 1/ ALL WOOD IS BALSAs.
 2/ COVER TOP OF FUSELAGE FROM A TO B & C TO D WITH BOND PAPER.
 3/ POWER MODEL WITH ONE LOOP OF 1/8TH FLAT RUBBER.

4/ DIHEDRAL - RAISE WING TIPS 1/8 INCH ABOVE BOTTOM OF FUSELAGE.
 5/ INDICATES TRUE SCALE TAIL AND DIHEDRAL

DRUINE TURBULENT
 By *Walt Mooney*
 5-3-64