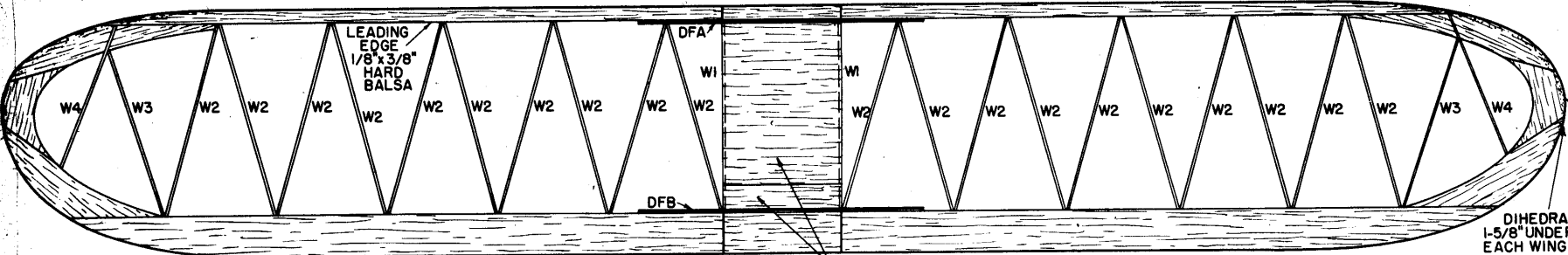


WING PLAN
TOP & BOTTOM WINGS ARE SAME EXCEPT FOR CENTER SECTION.

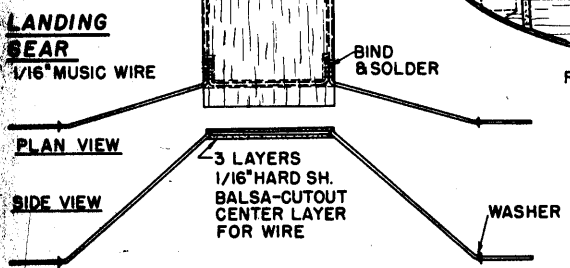
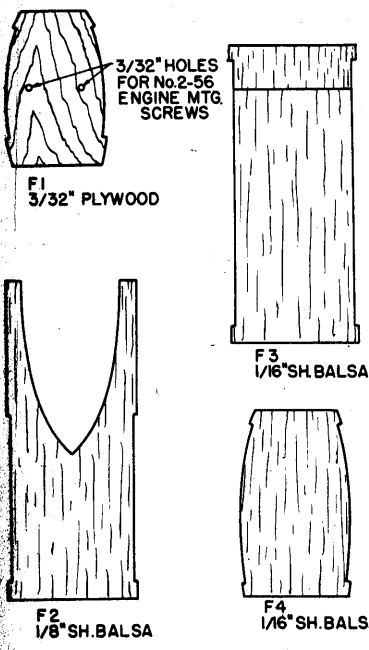


3/32" SOFT BALSAL TIP PIECES
4 EA. REQD.

DIHEDRAL 1-5/8" UNDER EACH WING TIP

TRAILING EDGE 7/32" x 3/4" MEDIUM BALSAL

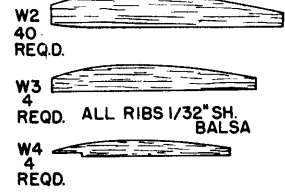
FORMERS



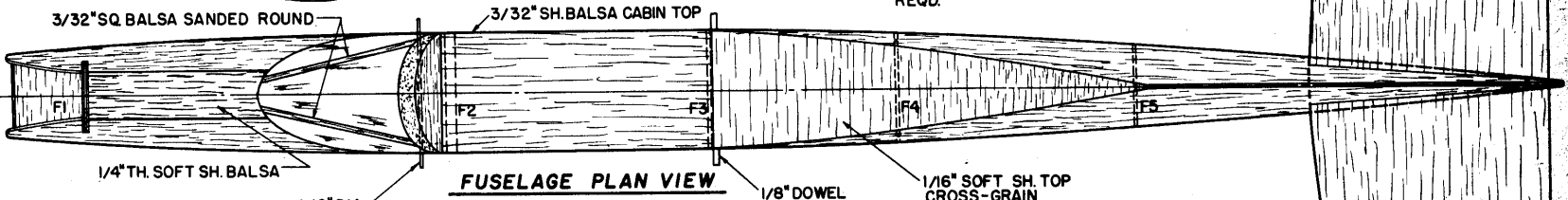
WINDSHIELD
.032 SH. CELLULOID (FLAT PATTERN- LEFT HALF)

DIHEDRAL FORMERS
1/16" THICK PLYWOOD
2 EA. REQD.

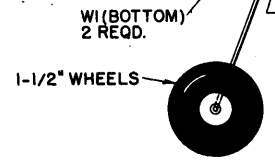
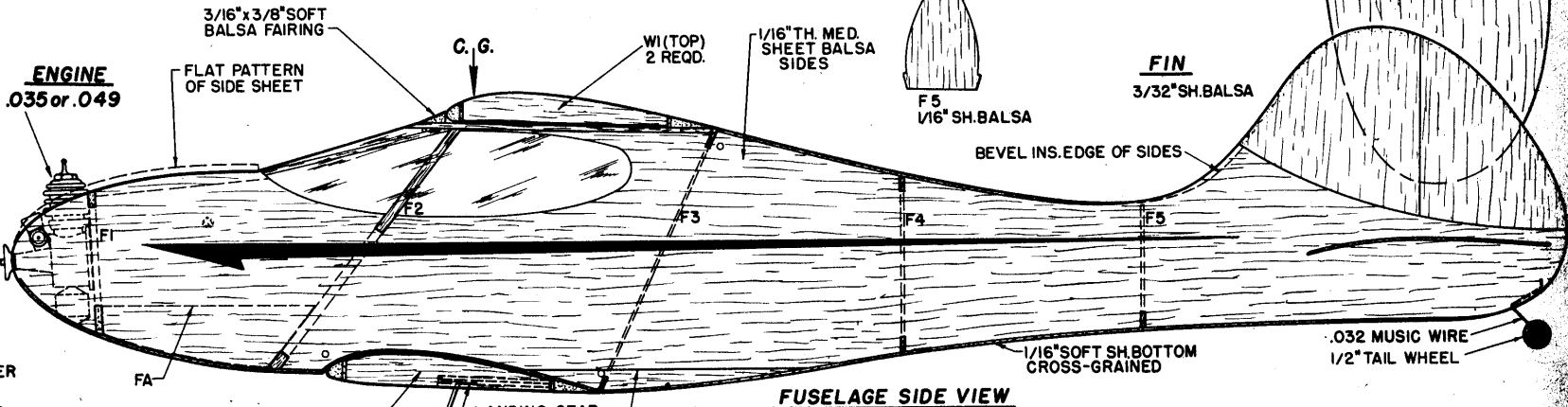
RIBS



STABILIZER
1/16" MED. SH. BALSAL



ENGINE
.035 or .049



BI-GONE

NORTHWEST CHAMPIONSHIPS
1/2A F.F. 1st PLACE
BY VERN CLEMENTS
Drawn: *Vern Clements*

