

TOP WING

3/4" TRI-STOCK
WING TIPS

9

8

7

6

STRUT RIB
POSITION

OPTION
BOTTOM

1/16" Balsa
PLANKING
TOP & BOTTOM

1

2

3

4

1/4" x 5/16" Balsa L.E.

BOTTOM WING

NG

1/4" x 5/16" Balsa L.E.

1/4" x 3/8" HARD
Balsa LE

5

4

3

2

3/16" x 1/8"
Spruce Spars

EDGE OF
PLANKING

JOIN WITH
2" WIDE
CLOTH &

1/4" x 3/4" Balsa TE

AL AILERONS:
WING

STRUT RIB
POSITION

5

6

7

8

ING

ALL-STAR BIP

SPECS:

WING SPAN: 34" TOP, 32" BOTTOM

AREA: 320 SQ." TOTAL

WEIGHT: 26 - 36 oz

POWER: .10 - .19 ci

CONTROL: RUDDER ONLY TO 4 CHANNEL

DESIGNED BY ROMEY BUCKOLT, 1972

KITTED BY ACE R/C TO APPROX. 1990

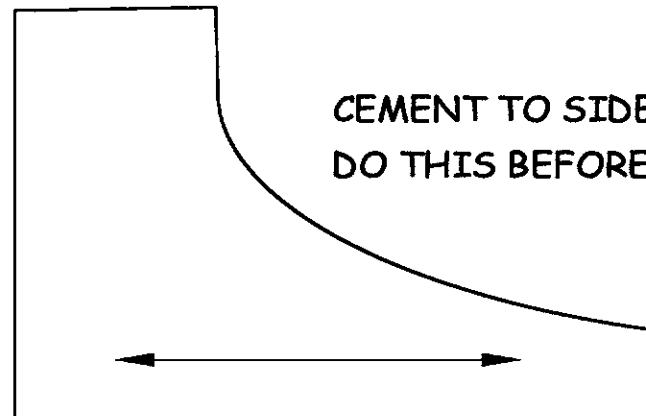
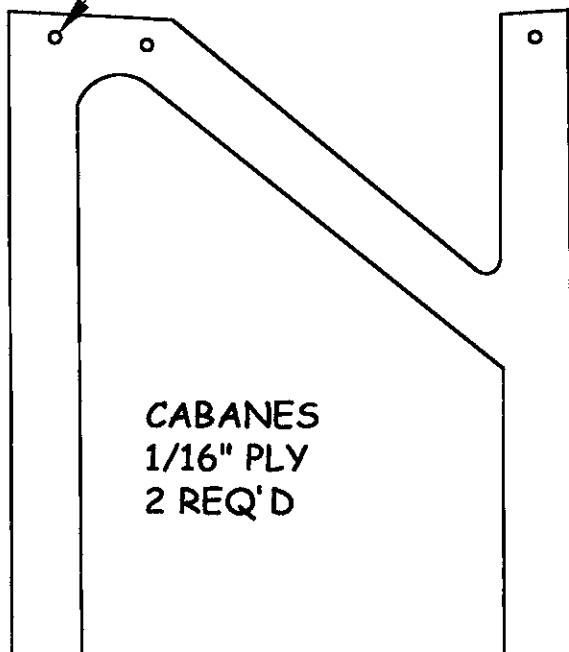
CAD BY DAVE FRITZKE, 2006

NOTES ON HATCH CONSTRUCTION:

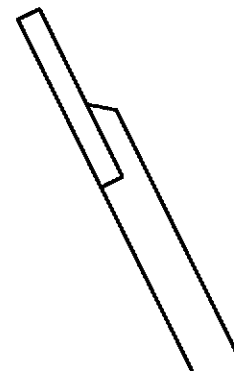
1. CUT Balsa block to size 3" x 9"-3/4" to 1-1/4"
2. SAW CABANE STRUT SLOTS PER TOP AND END VIEWS
3. DRILL A 1/4" HOLE FOR DOWEL 3/4" DEEP
4. ASSURE A GOOD FIT OF HATCH BLOCK TO TOP OF FUSE
5. INSERT DOWEL & PLACE F3 ON END OF BLOCK
6. CEMENT F3 TO FUSE SIDES USING HATCH BLOCK TO LOCATE
7. INSTALL COCKPIT COAMING, THEN CARVE BLOCK TO SHAPE & BLEND WITH COCKPIT AREA
8. NOW INSTALL CABANE STRUTS FLUSH WITH BOTTOM & BACK OF BLOCK

INGS WITH
5 oz GLASS
EPOXY

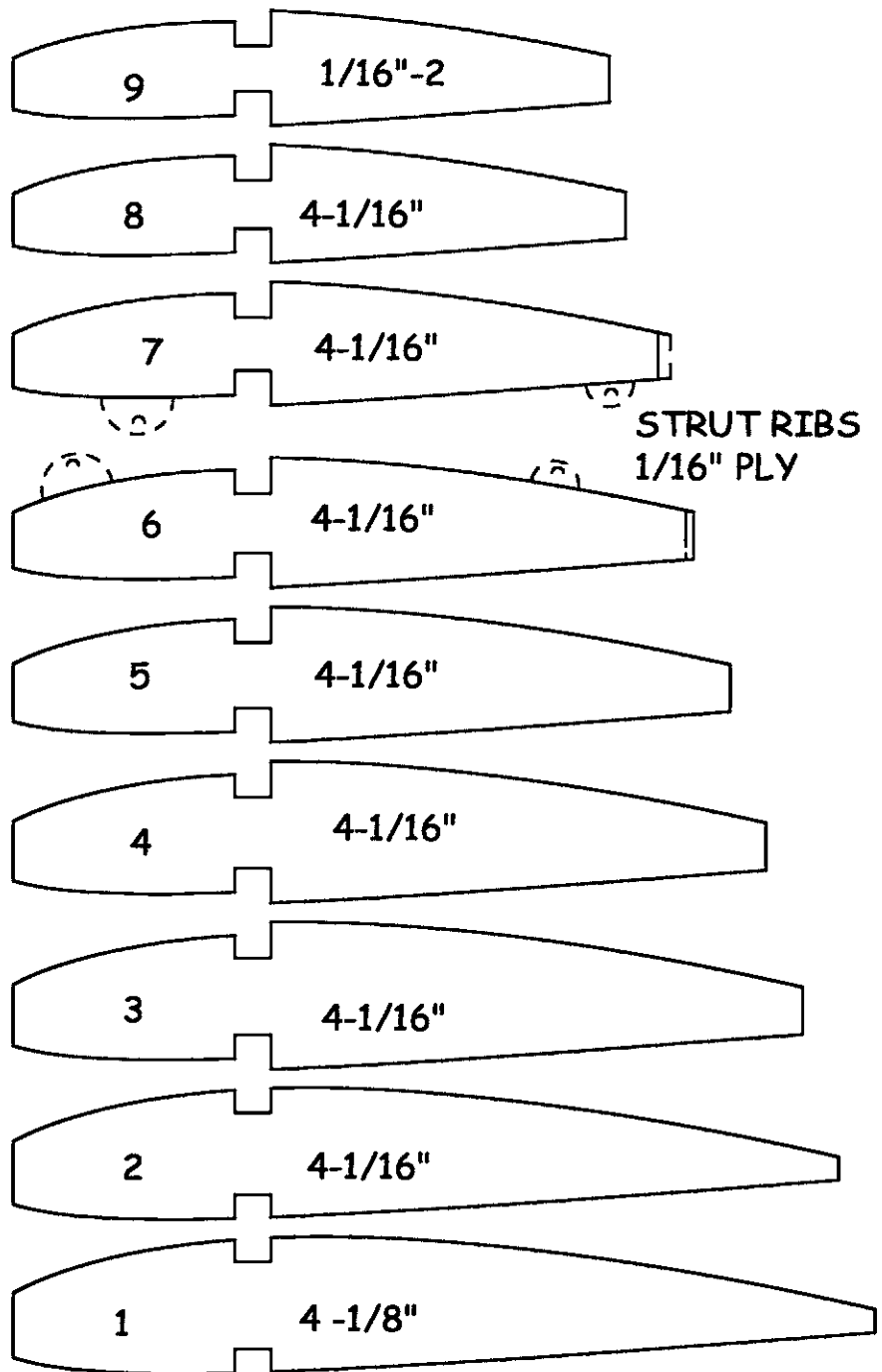
1/32 HOLES FOR
BINDING THREAD



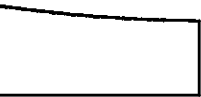
COCKPIT COAMING 3/32" A GRA



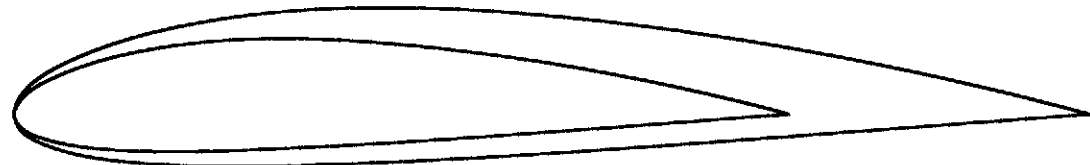
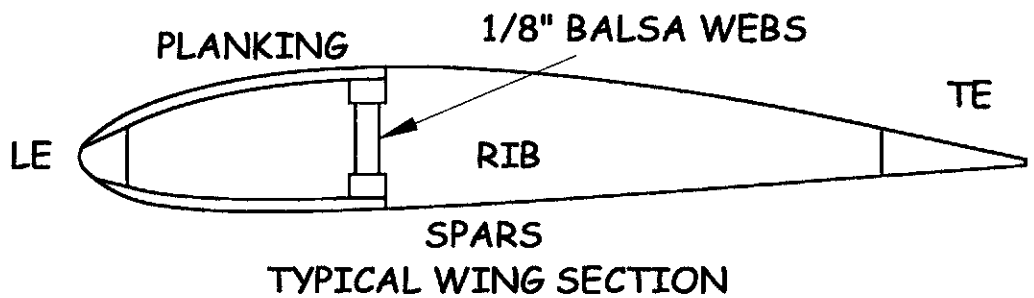
PLANE



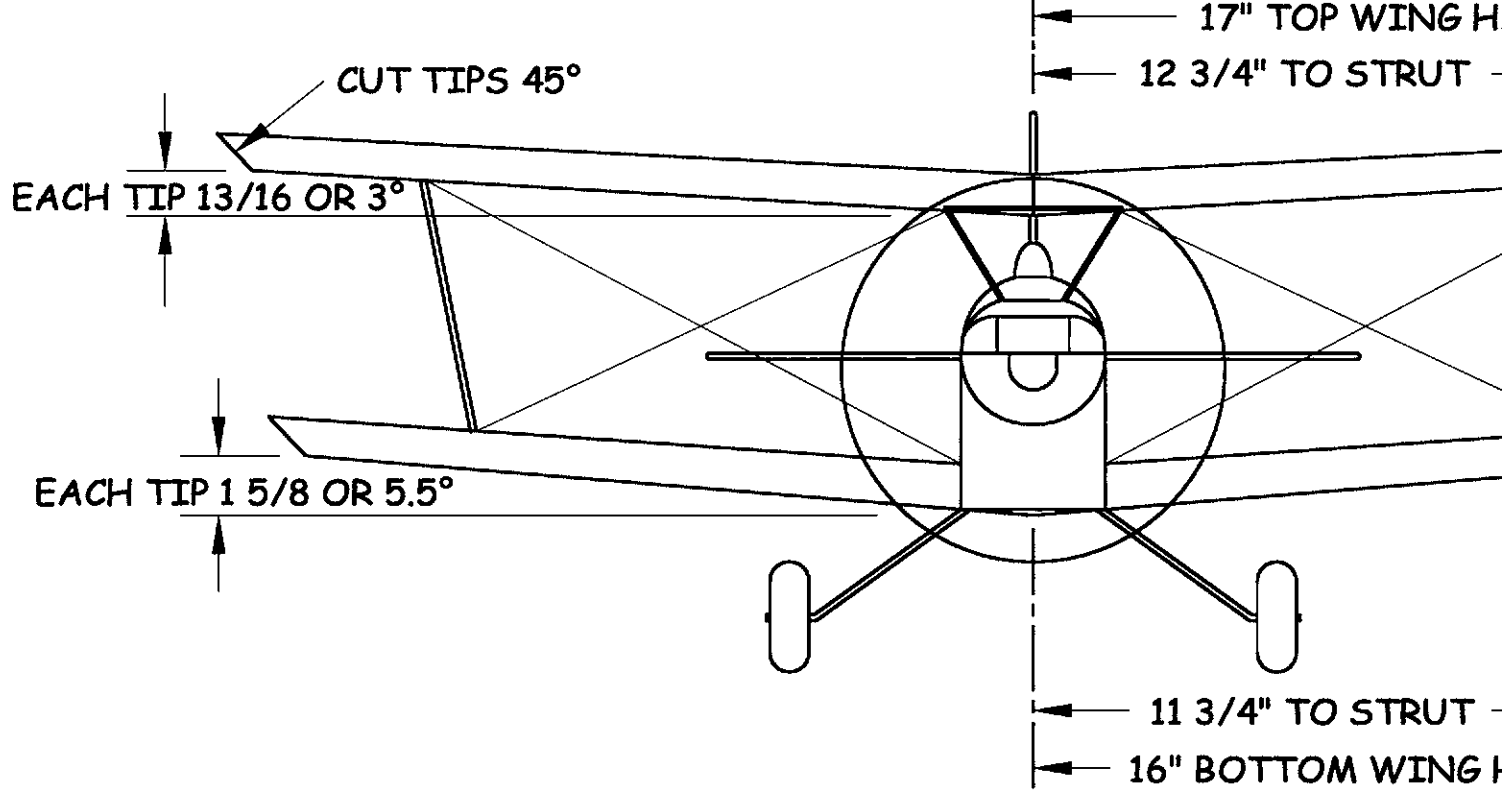
FIRST, BEND AROUND F3.
CARVING TOP BLOCK



IN Balsa

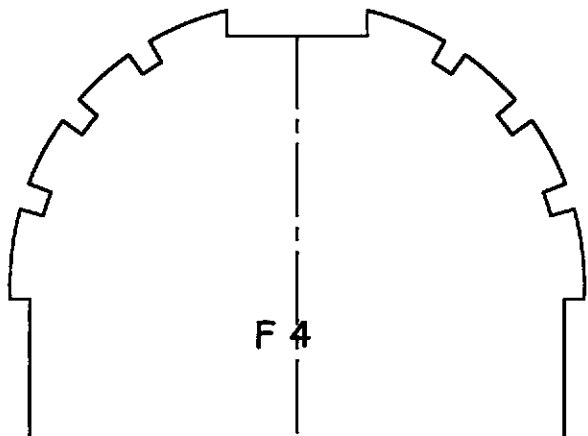
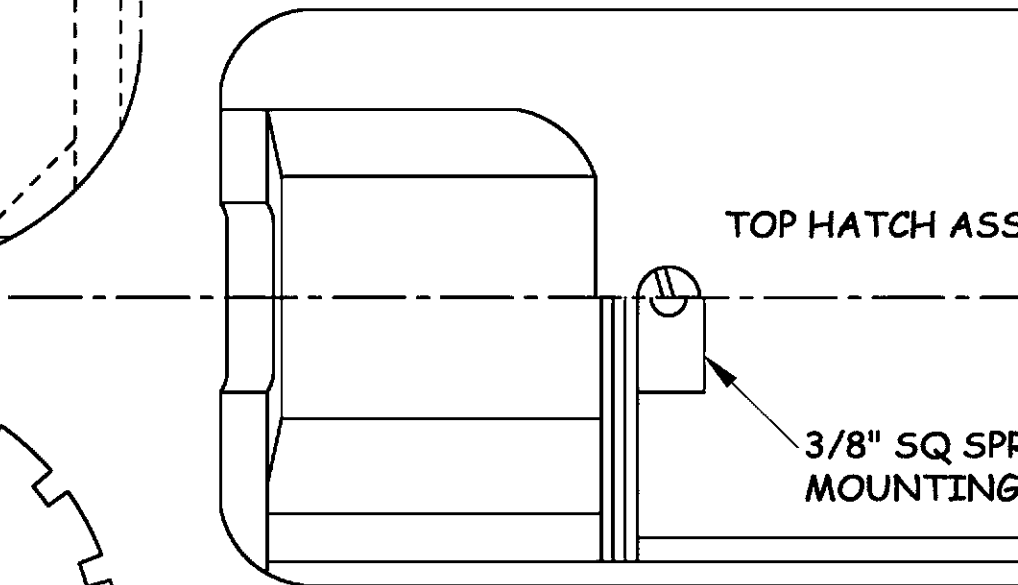
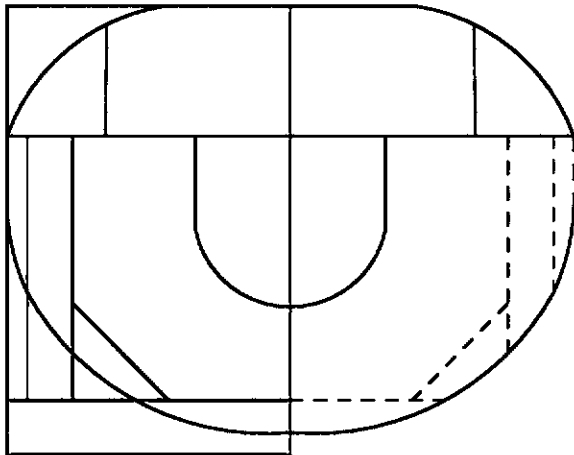


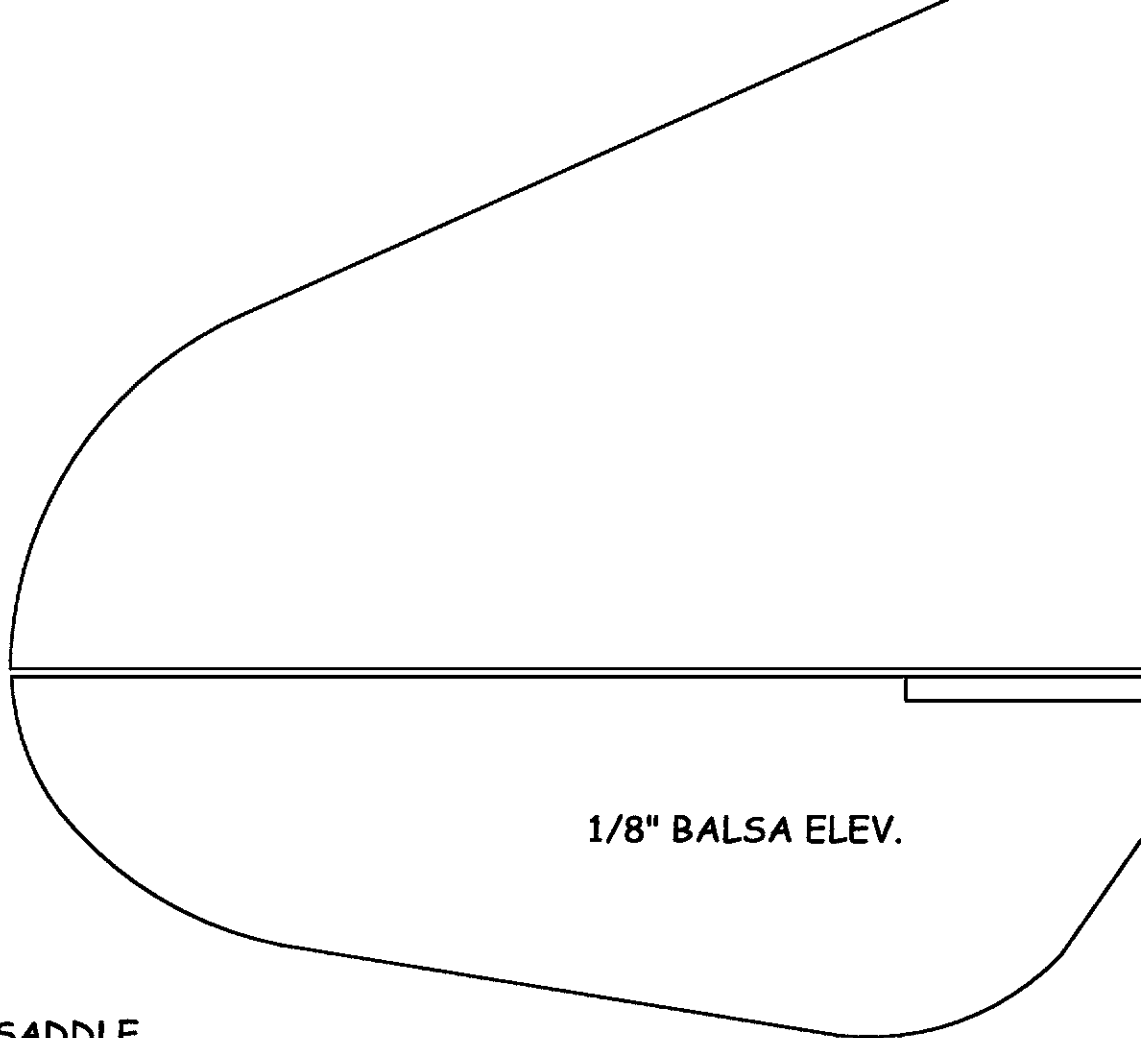
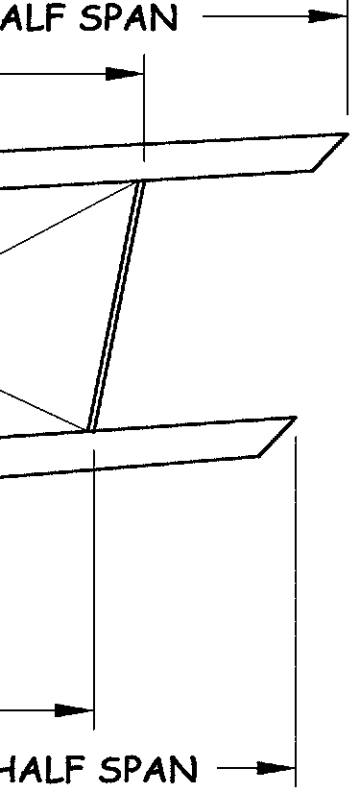
FOAM WING TEMPLATES
SIZED FOR 1/32" SHEETING



W/AILERONS USE 1/2 DIHEDRAL SHOWN

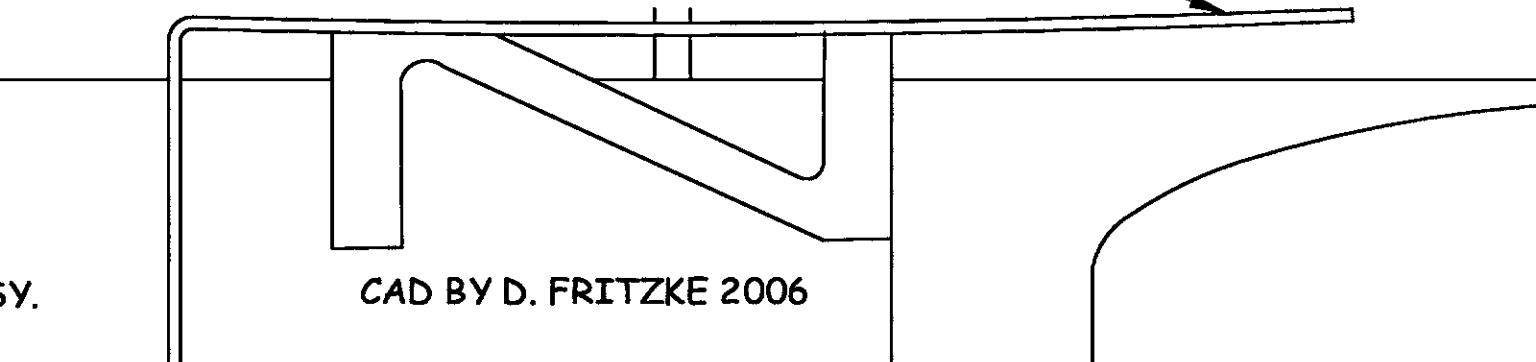
BUILT-UP AND FINISHED VIEWS OF COWL FACE



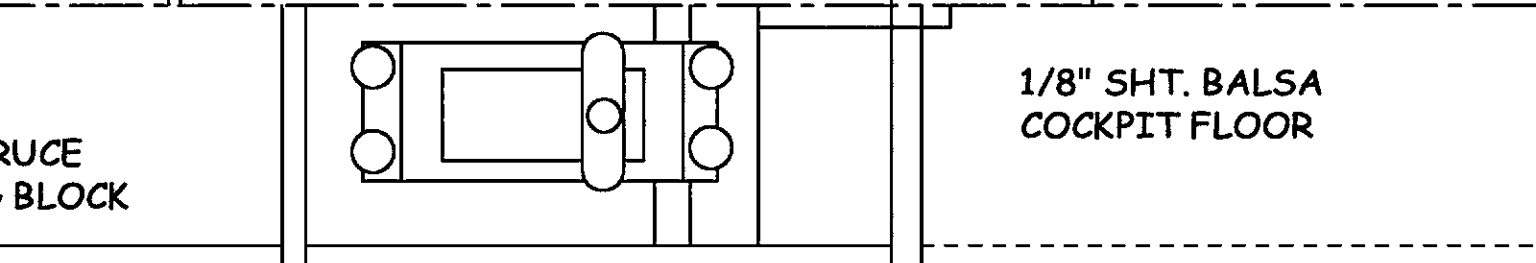


1/8" Balsa ELEV.

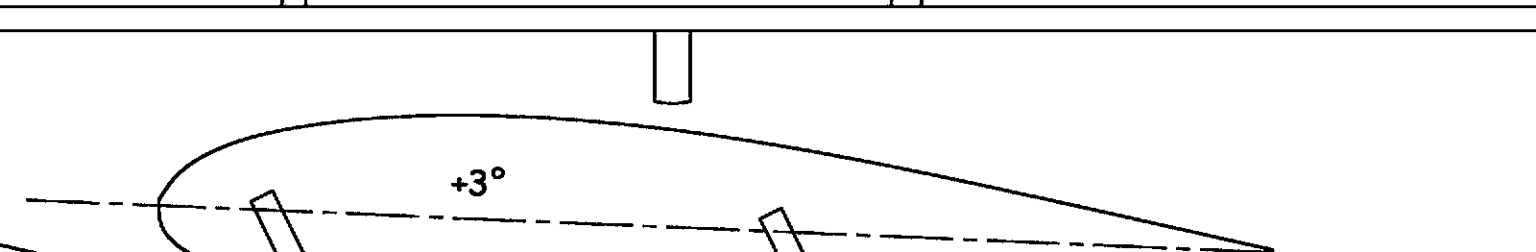
TOP WING SADDLE
1/16" M.W. BEND AS SHOWN IN TOP & SIDE
VIEWS. BIND W/HEAVY THREAD & CEMENT



CAD BY D. FRITZKE 2006



1/8" SHT. Balsa
COCKPIT FLOOR



+3°

1/8" SHEET Balsa STAB

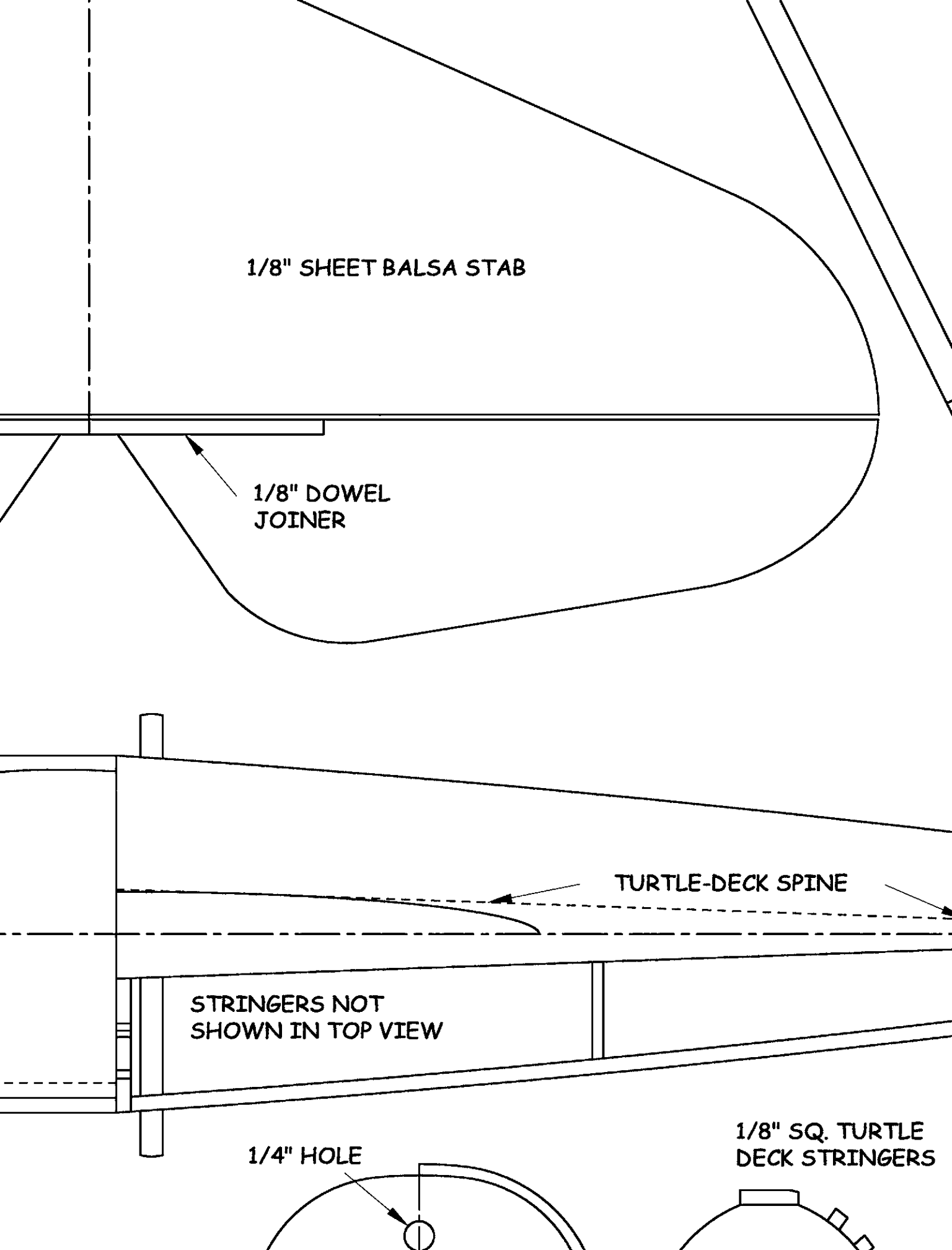
1/8" DOWEL JOINER

TURTLE-DECK SPINE

STRINGERS NOT SHOWN IN TOP VIEW

1/4" HOLE

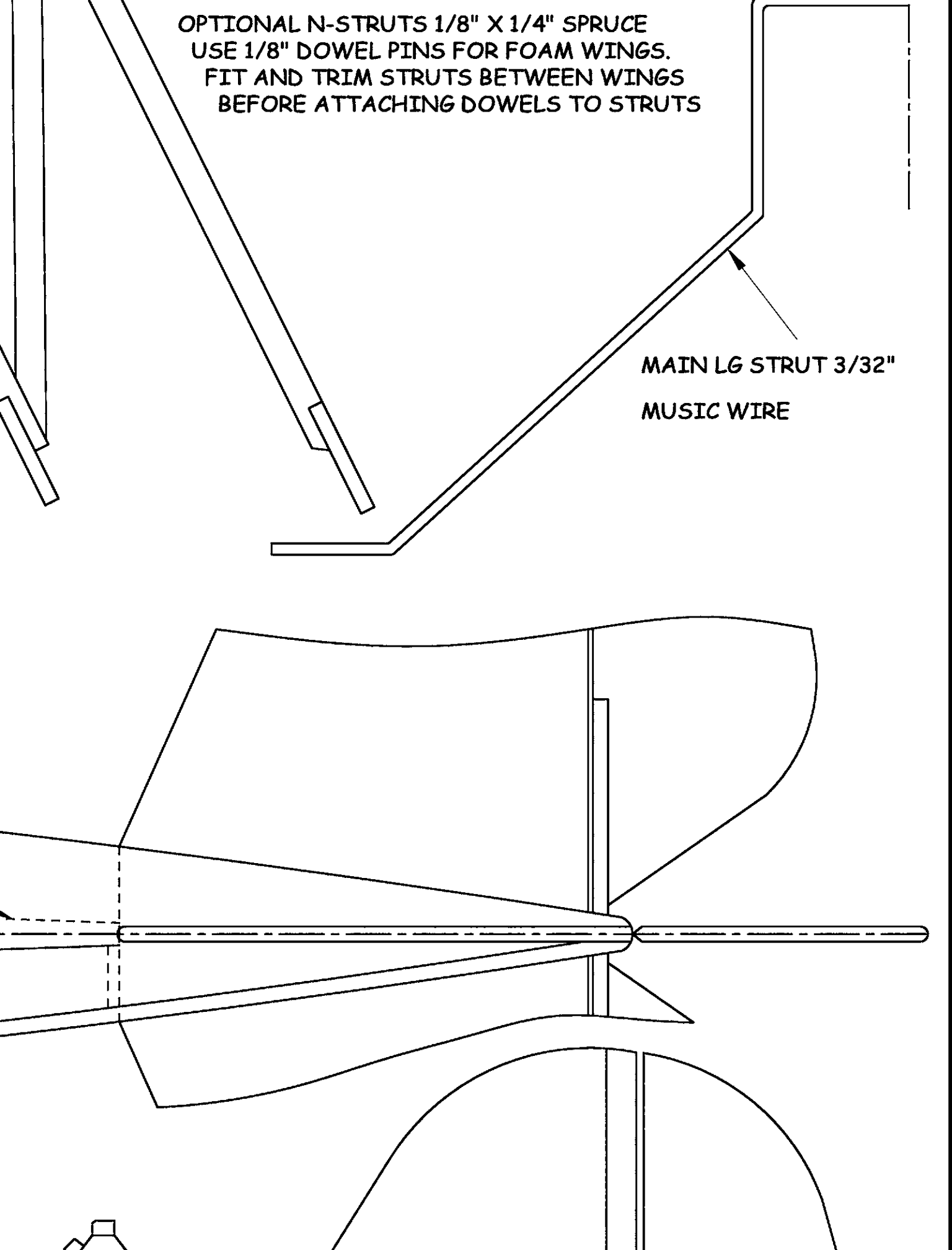
1/8" SQ. TURTLE DECK STRINGERS



OPTIONAL N-STRUTS 1/8" X 1/4" SPRUCE
USE 1/8" DOWEL PINS FOR FOAM WINGS.
FIT AND TRIM STRUTS BETWEEN WINGS
BEFORE ATTACHING DOWELS TO STRUTS

MAIN LG STRUT 3/32"

MUSIC WIRE



1/8" LITE PLY

WINDSHIELD PATTERN

OS .10
SHOWN

#10-32 NYLON
SCREW

NOSE BLOCK
1/4" BALSA

3° DOWN
THRUST

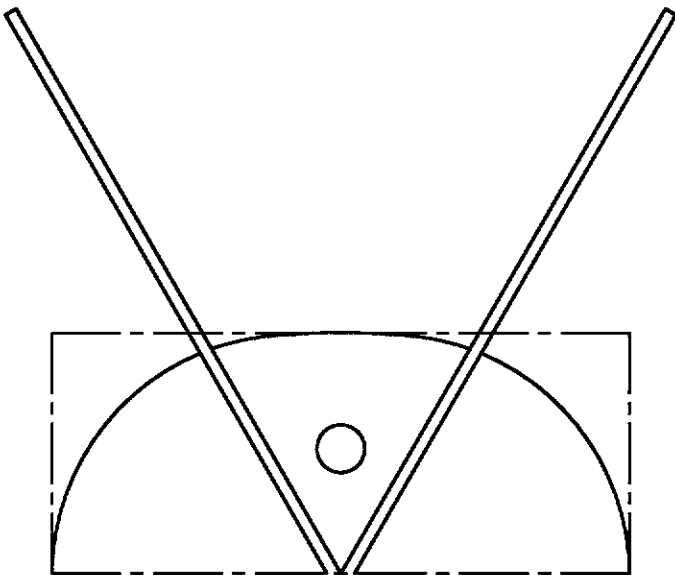
3-4 OZ TA

F1

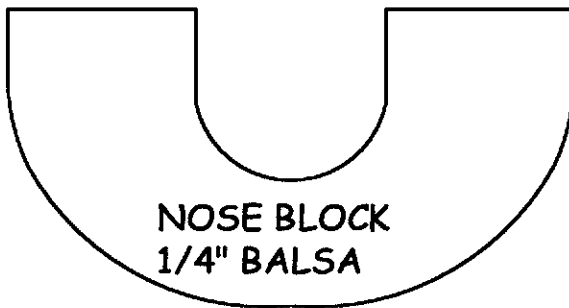
BAT

1/2" TRI STOCK

CHIN BLOCKS
1/4" BALSA



REAR VIEW OF HATCH



NOSE BLOCK
1/4" BALS

F1
FIREWALL
3/16" BIRCH PLY

BEVEL BOTTOM

C.G. RANGE

USE 2" SCALE PLO

NK

T.

F2

F3

WING STRUT
POSITION REF.
ONLY

SERVOS

RX

0°

1/16" MW REAR STRUT BEND TO FIT & SOLID
AT AXLE AFTER MAIN STRUT IS IN PLACE

LG PLATE
3/32" LITE PLY

3/32"

2 1/2" LIGHT WHEELS

FRONT EDGE

