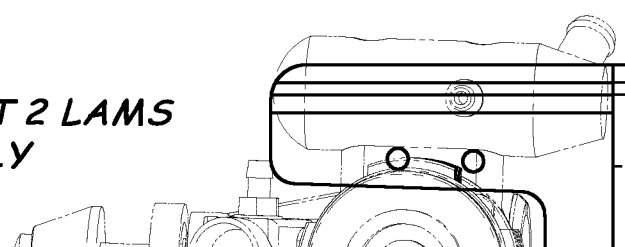
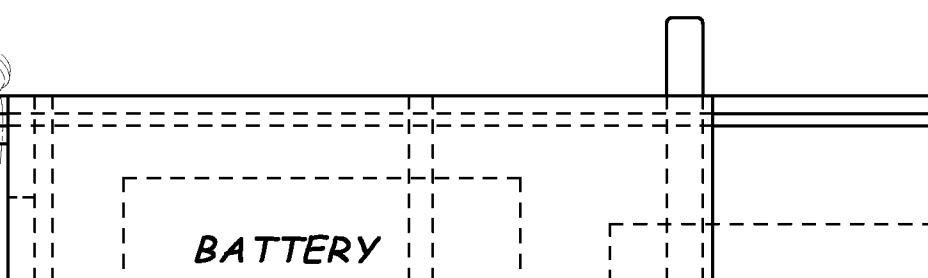
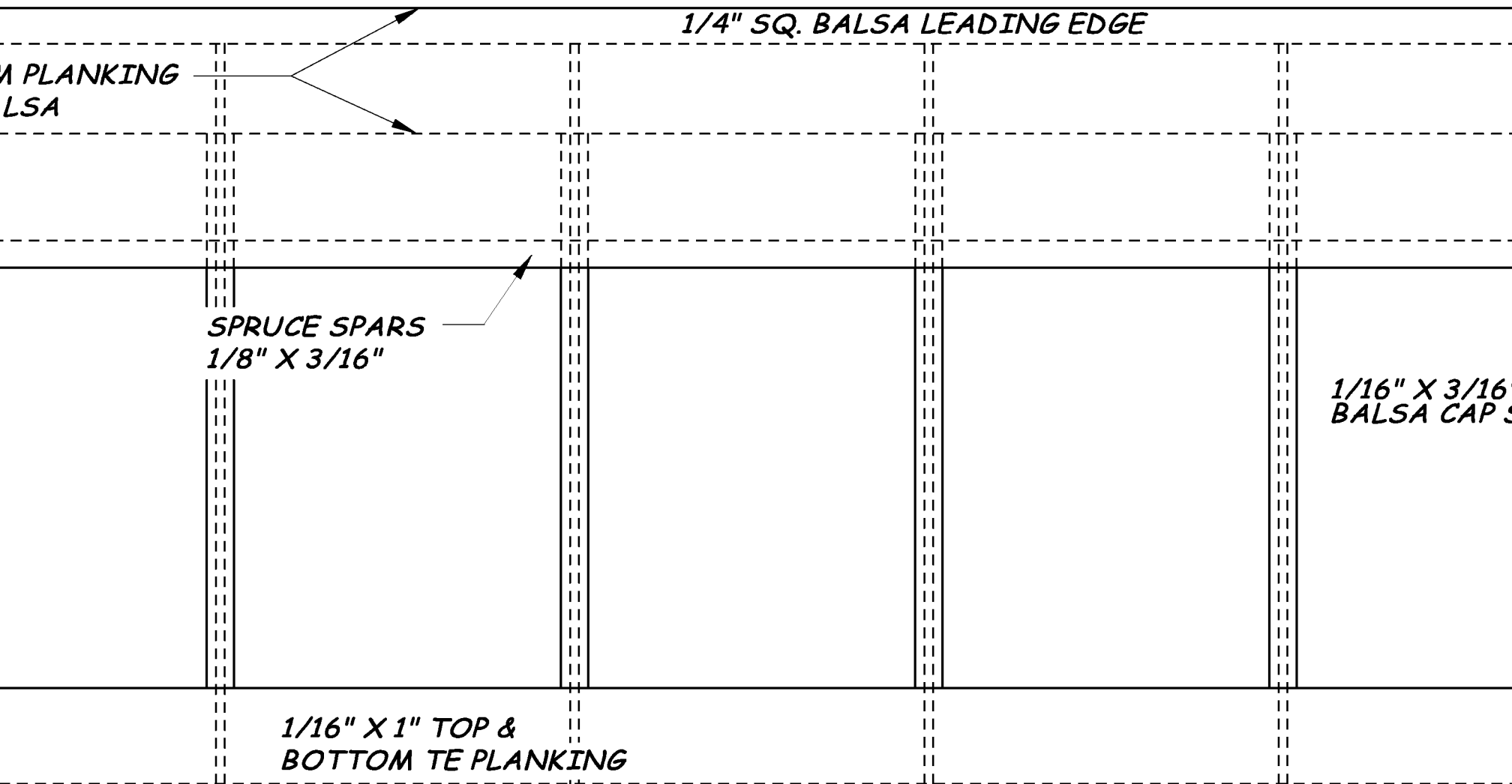


*BEAM MOUNT 2 LAMS
1/8" BIRCH PLY*

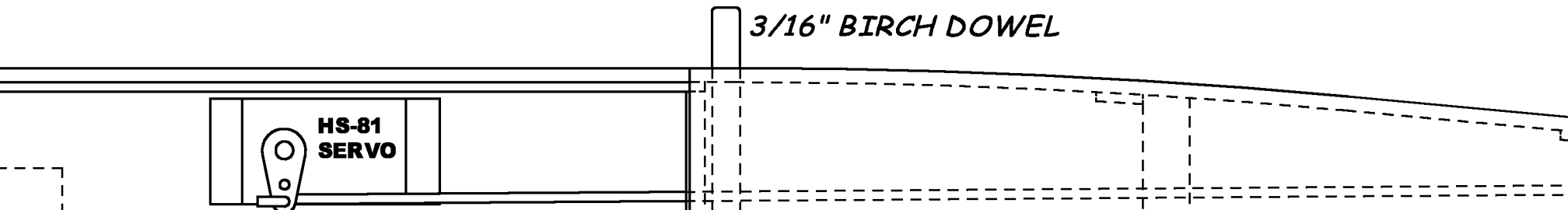


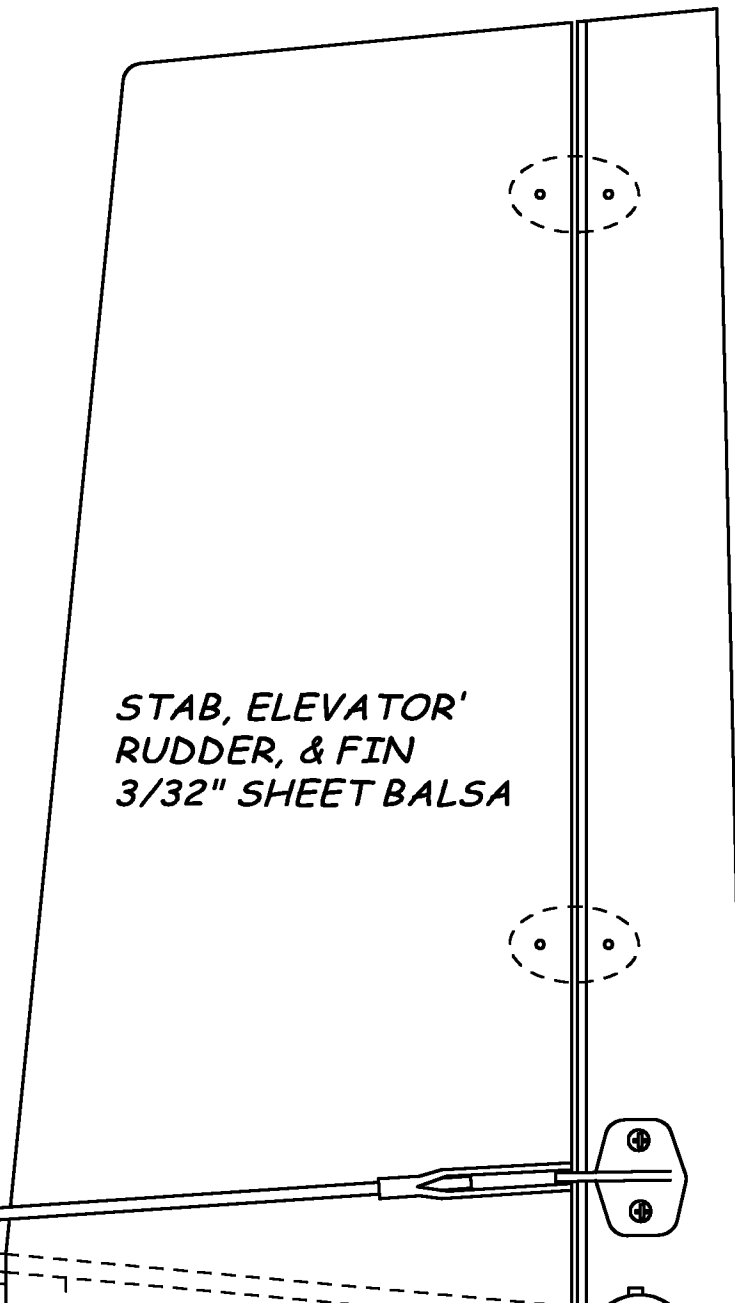
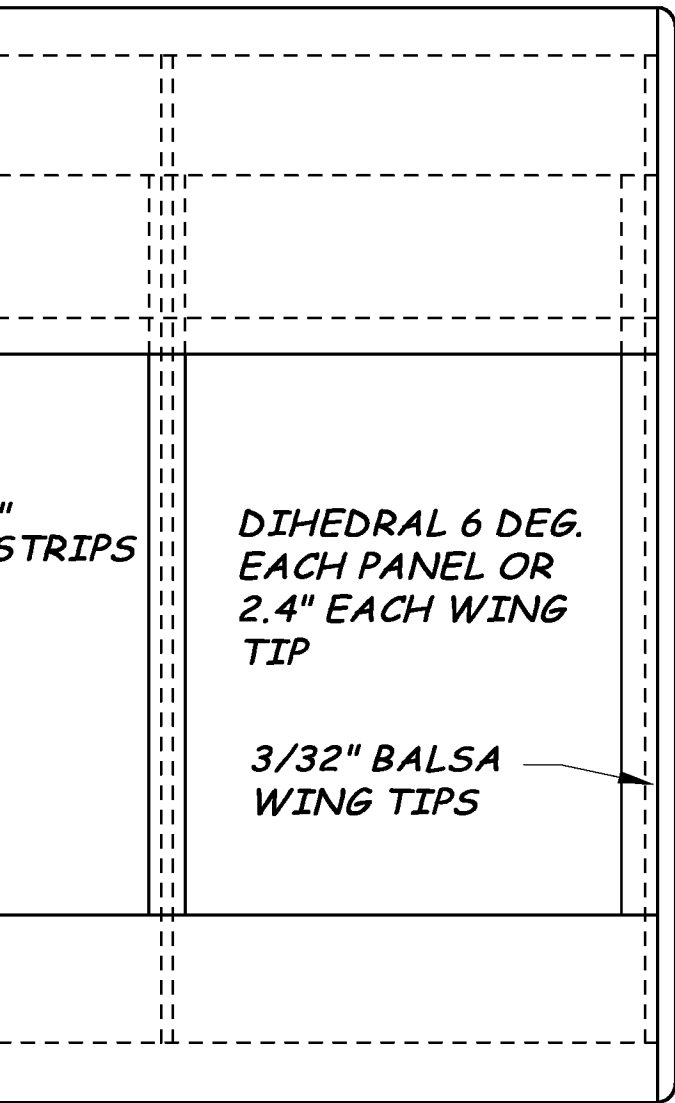
BATTERY

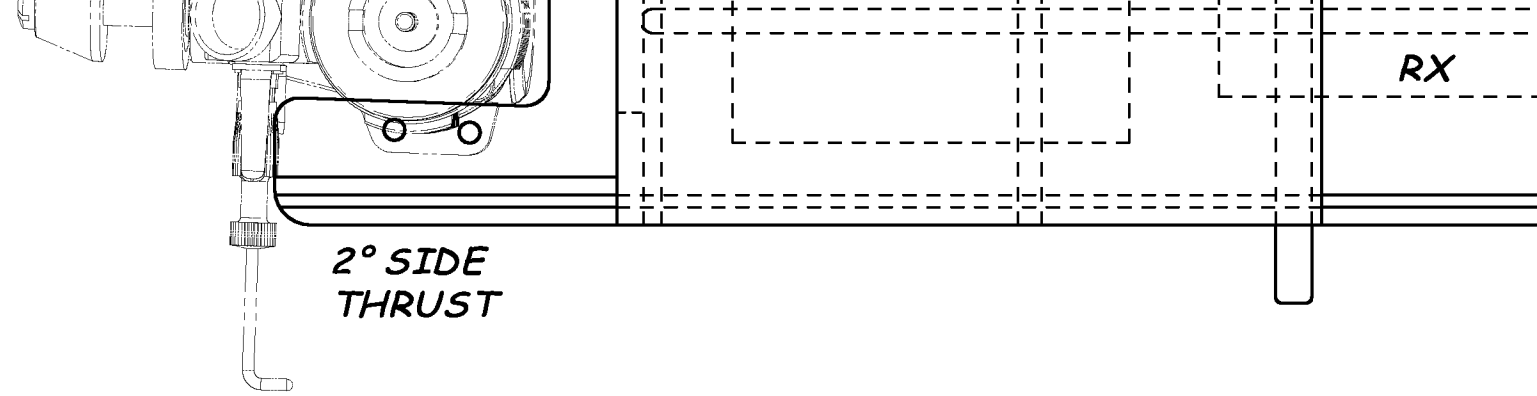




WING TOP VIEW





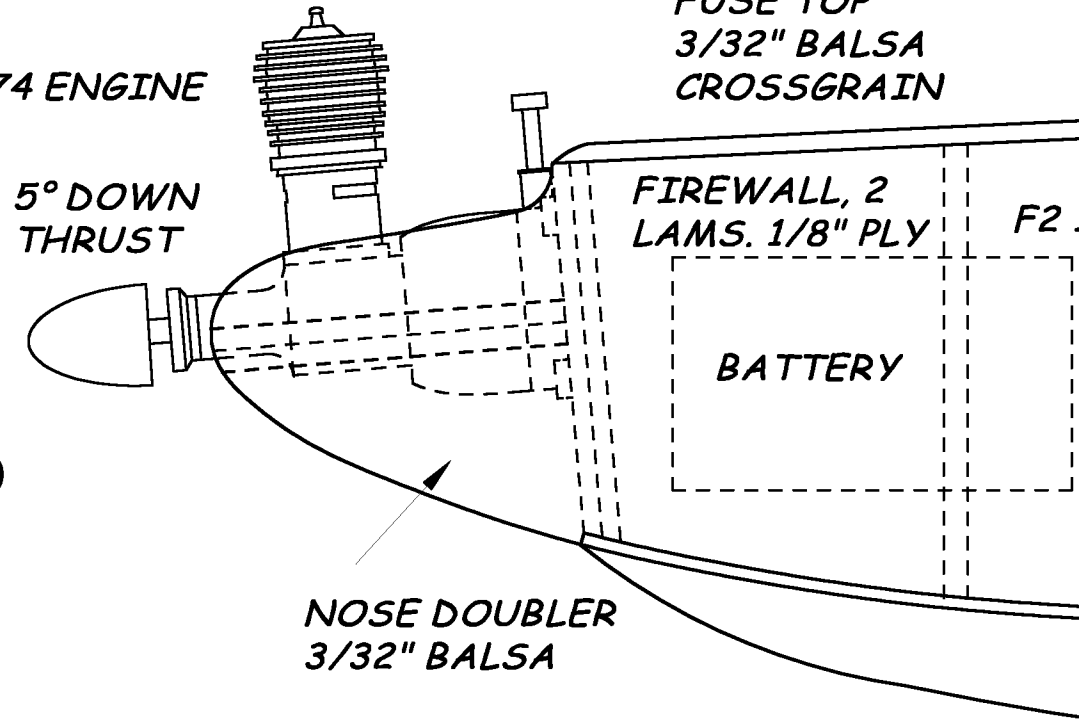


PAPILLON



049~074 ENGINE

FUSE TOP
3/32" Balsa
CROSSGRAIN



LENGTH - 641.4mm (25.25")
WING SPAN - 1087mm (42.8")
WING AREA - 15.7dm (244 sq. in)
WEIGHT - 550 ~ 650g (19 ~ 23 oz)
ENGINE - 049 ~ 074
RADIO - 2 ~ 3 CHANNEL
DESIGNED BY Y. KAURAHASHI
CAD BY DAVID FRITZKE
PAPILLON KOYOSHO

